

PRL Antibody (C-term)

Affinity Purified Rabbit Polyclonal Antibody (Pab)

Catalog # AP14917b

Product Information

| | |
|--------------------------|--|
| Application | WB, FC, E |
| Primary Accession | P01236 |
| Other Accession | Q28632 , P01238 , NP_000939.1 , NP_001157030.1 |
| Reactivity | Human |
| Predicted | Pig, Rabbit |
| Host | Rabbit |
| Clonality | Polyclonal |
| Isotype | Rabbit IgG |
| Clone Names | RB35392 |
| Calculated MW | 25876 |
| Antigen Region | 188-216 |

Additional Information

| | |
|---------------------------|--|
| Gene ID | 5617 |
| Other Names | Prolactin, PRL, PRL |
| Target/Specificity | This PRL antibody is generated from rabbits immunized with a KLH conjugated synthetic peptide between 188-216 amino acids from the C-terminal region of human PRL. |
| Dilution | WB~~1:1000 FC~~1:10~50 E~~Use at an assay dependent concentration. |
| Format | Purified polyclonal antibody supplied in PBS with 0.09% (W/V) sodium azide. This antibody is purified through a protein A column, followed by peptide affinity purification. |
| Storage | Maintain refrigerated at 2-8°C for up to 2 weeks. For long term storage store at -20°C in small aliquots to prevent freeze-thaw cycles. |
| Precautions | PRL Antibody (C-term) is for research use only and not for use in diagnostic or therapeutic procedures. |

Protein Information

| | |
|--------------------------|---|
| Name | PRL |
| Function | Prolactin acts primarily on the mammary gland by promoting lactation. |
| Cellular Location | Secreted. |

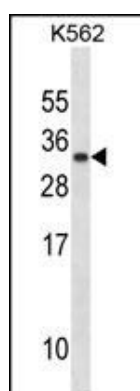
Background

Prolactin acts primarily on the mammary gland by promoting lactation.

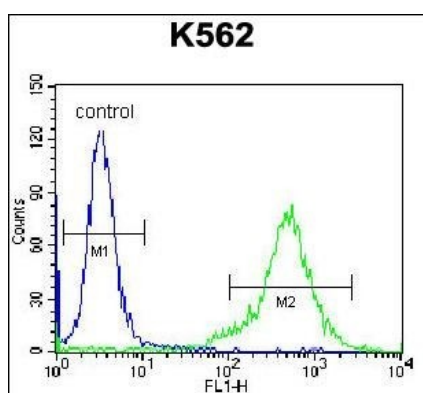
References

Ucisk-Akkaya, E., et al. Mol. Hum. Reprod. 16(10):770-777(2010)
Strauss, J.S., et al. Psychoneuroendocrinology 35(9):1422-1428(2010)
Gordon, I., et al. Horm Behav 58(3):513-518(2010)
Voorhees, J.L., et al. J. Biol. Chem. 285(26):20022-20030(2010)
Yokoyama, K., et al. Nephron Clin Pract 115 (4), C237-C243 (2010) :

Images



PRL Antibody (C-term) (Cat. #AP14917b) western blot analysis in K562 cell line lysates (35ug/lane). This demonstrates the PRL antibody detected the PRL protein (arrow).



PRL Antibody (C-term) (Cat. #AP14917b) flow cytometric analysis of K562 cells (right histogram) compared to a negative control cell (left histogram). FITC-conjugated donkey-anti-rabbit secondary antibodies were used for the analysis.

Please note: All products are 'FOR RESEARCH USE ONLY. NOT FOR USE IN DIAGNOSTIC OR THERAPEUTIC PROCEDURES'.