

# Actin (ACTB/ACTC) Antibody (Center)

Purified Rabbit Polyclonal Antibody (Pab)

Catalog # AP1491c

## Product Information

---

<b>Application</b>	WB, IHC-P, E
<b>Primary Accession</b>	<a href="#">P68032</a>
<b>Other Accession</b>	<a href="#">P60010</a> , <a href="#">P68136</a> , <a href="#">P68135</a> , <a href="#">P68137</a> , <a href="#">P68134</a> , <a href="#">P68133</a> , <a href="#">P68139</a> , <a href="#">P68138</a> , <a href="#">P63269</a> , <a href="#">P63268</a> , <a href="#">P63267</a> , <a href="#">P63270</a> , <a href="#">Q5E9B5</a> , <a href="#">A2BDB0</a> , <a href="#">P63259</a> , <a href="#">P63260</a> , <a href="#">P63261</a> , <a href="#">Q5ZMQ2</a> , <a href="#">P63258</a> , <a href="#">P04751</a> , <a href="#">P68035</a> , <a href="#">P68033</a> , <a href="#">P68034</a> , <a href="#">Q3ZC07</a> , <a href="#">Q93400</a> , <a href="#">P60711</a> , <a href="#">P29751</a> , <a href="#">Q6QAAQ1</a> , <a href="#">P60710</a> , <a href="#">Q4R561</a> , <a href="#">P60709</a> , <a href="#">P48975</a>
<b>Reactivity</b>	Human
<b>Predicted</b>	Mouse, Rat, Rabbit, Zebrafish, Hamster, Monkey, Pig, Chicken, Bovine, Drosophila, C.Elegans, Xenopus, Yeast
<b>Host</b>	Rabbit
<b>Clonality</b>	Polyclonal
<b>Isotype</b>	Rabbit IgG
<b>Clone Names</b>	RB13801
<b>Calculated MW</b>	42019
<b>Antigen Region</b>	189-218

## Additional Information

---

<b>Gene ID</b>	70
<b>Other Names</b>	Actin, alpha cardiac muscle 1, Alpha-cardiac actin, ACTC1, ACTC
<b>Target/Specificity</b>	This Actin (ACTB/ACTC) antibody is generated from rabbits immunized with a KLH conjugated synthetic peptide between 189-218 amino acids from the Central region of human Actin (ACTB/ACTC).
<b>Dilution</b>	WB~~1:1000 IHC-P~~1:100~500 E~~Use at an assay dependent concentration.
<b>Format</b>	Purified polyclonal antibody supplied in PBS with 0.09% (W/V) sodium azide. This antibody is prepared by Saturated Ammonium Sulfate (SAS) precipitation followed by dialysis against PBS.
<b>Storage</b>	Maintain refrigerated at 2-8°C for up to 2 weeks. For long term storage store at -20°C in small aliquots to prevent freeze-thaw cycles.
<b>Precautions</b>	Actin (ACTB/ACTC) Antibody (Center) is for research use only and not for use in diagnostic or therapeutic procedures.

## Protein Information

---

<b>Name</b>	ACTC1
-------------	-------

<b>Synonyms</b>	ACTC
<b>Function</b>	Actins are highly conserved proteins that are involved in various types of cell motility and are ubiquitously expressed in all eukaryotic cells.
<b>Cellular Location</b>	Cytoplasm, cytoskeleton.

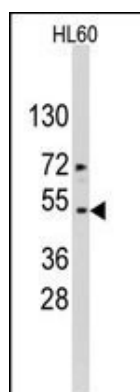
## Background

Actins are highly conserved proteins that are involved in cell motility, structure, and integrity. ACTB/ACTC are nonmuscle cytoskeletal actins and major constituents of the contractile apparatus. Defects in ACTB are a cause of juvenile-onset dystonia. Defects in ACTC have been associated with idiopathic dilated cardiomyopathy (IDC) and familial hypertrophic cardiomyopathy (FHC).

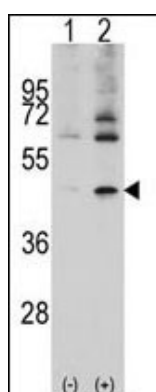
## References

Villebeck,L., Biochemistry 46 (44), 12639-12647 (2007)  
 Avizienyte,E., Exp. Cell Res. 313 (15), 3175-3188 (2007)  
 Bouldin,A.A., Muscle Nerve 35 (2), 254-258 (2007)

## Images

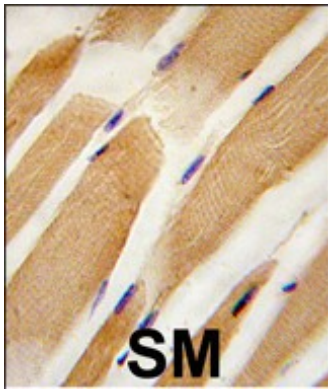


Western blot analysis of ACTB/ACTC Antibody (Center) in HL60 cell line lysates (35ug/lane). Target protein (arrow) was detected using the purified Pab.



Western blot analysis of ACTB/ACTC (arrow) using rabbit polyclonal ACTB/ACTC Antibody (Center) (Cat.#AP1491a).293 cell lysates (2 ug/lane) either nontransfected (Lane 1) or transiently transfected with the ACTB/ACTC gene (Lane 2) (Origene Technologies).

Formalin-fixed and paraffin-embedded human skeletal muscle tissue reacted with ACTB/ACTC antibody (Center), which was peroxidase-conjugated to the secondary antibody, followed by DAB staining. This data demonstrates the use of this antibody for immunohistochemistry; clinical relevance has not been evaluated.



Please note: All products are 'FOR RESEARCH USE ONLY. NOT FOR USE IN DIAGNOSTIC OR THERAPEUTIC PROCEDURES'.