

# CALCA/CT Antibody (C-term)

Affinity Purified Rabbit Polyclonal Antibody (Pab)

Catalog # AP14934b

## Product Information

---

Application	WB, E
Primary Accession	<a href="#">P01258</a>
Other Accession	<a href="#">NP_001732.1</a> , <a href="#">NP_001029124.1</a>
Reactivity	Human
Host	Rabbit
Clonality	Polyclonal
Isotype	Rabbit IgG
Clone Names	RB35510
Calculated MW	15467
Antigen Region	104-132

## Additional Information

---

Gene ID	796
Other Names	Calcitonin, Calcitonin, Katalcalcin, Calcitonin carboxyl-terminal peptide, CCP, PDN-21, CALCA, CALC1
Target/Specificity	This CALCA/CT antibody is generated from rabbits immunized with a KLH conjugated synthetic peptide between 104-132 amino acids from the C-terminal region of human CALCA/CT.
Dilution	WB~~1:1000 E~~Use at an assay dependent concentration.
Format	Purified polyclonal antibody supplied in PBS with 0.09% (W/V) sodium azide. This antibody is purified through a protein A column, followed by peptide affinity purification.
Storage	Maintain refrigerated at 2-8°C for up to 2 weeks. For long term storage store at -20°C in small aliquots to prevent freeze-thaw cycles.
Precautions	CALCA/CT Antibody (C-term) is for research use only and not for use in diagnostic or therapeutic procedures.

## Protein Information

---

Name	CALCA ( <a href="#">HGNC:1437</a> )
Synonyms	CALC1
Function	[Calcitonin]: Calcitonin is a peptide hormone that causes a rapid but

short-lived drop in the level of calcium and phosphate in blood by promoting the incorporation of those ions in the bones. Calcitonin function is mediated by the calcitonin receptor/CALCR and the CALCR-RAMP2 (AMYR2) receptor complex (PubMed:[35324283](#)).

#### Cellular Location

Secreted.

## Background

---

This gene encodes the peptide hormones calcitonin, calcitonin gene-related peptide and katacalcin by tissue-specific alternative RNA splicing of the gene transcripts and cleavage of inactive precursor proteins. Calcitonin is involved in calcium regulation and acts to regulate phosphorus metabolism. Calcitonin gene-related peptide functions as a vasodilator while katacalcin is a calcium-lowering peptide. Multiple transcript variants encoding different isoforms have been found for this gene.

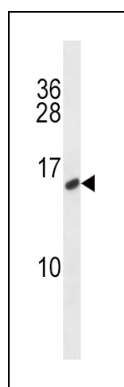
## References

---

Giroux, S., et al. Bone 47(5):975-981(2010)  
Bailey, S.D., et al. Diabetes Care 33(10):2250-2253(2010)  
Lee, J.Y., et al. Korean J Lab Med 30(4):406-413(2010)  
Giovanella, L., et al. Clin. Chem. Lab. Med. 48(8):1163-1165(2010)  
Hatzistilianou, M. ScientificWorldJournal 10, 1941-1946 (2010) :

## Images

---



CALCA/CT Antibody (C-term) (Cat. #AP14934b) western blot analysis in MDA-MB231 cell line lysates (35ug/lane). This demonstrates the CALCA/CT antibody detected the CALCA/CT protein (arrow).

Please note: All products are 'FOR RESEARCH USE ONLY. NOT FOR USE IN DIAGNOSTIC OR THERAPEUTIC PROCEDURES'.