

ACTN2 Antibody (C-term)

Affinity Purified Rabbit Polyclonal Antibody (Pab)

Catalog # AP14950b

Product Information

Application	WB, E
Primary Accession	P35609
Other Accession	Q9JI91 , Q3ZC55 , NP_001094.1
Reactivity	Mouse
Predicted	Bovine
Host	Rabbit
Clonality	Polyclonal
Isotype	Rabbit IgG
Clone Names	RB34402
Calculated MW	103854
Antigen Region	751-779

Additional Information

Gene ID	88
Other Names	Alpha-actinin-2, Alpha-actinin skeletal muscle isoform 2, F-actin cross-linking protein, ACTN2
Target/Specificity	This ACTN2 antibody is generated from rabbits immunized with a KLH conjugated synthetic peptide between 751-779 amino acids from the C-terminal region of human ACTN2.
Dilution	WB~~1:1000 E~~Use at an assay dependent concentration.
Format	Purified polyclonal antibody supplied in PBS with 0.09% (W/V) sodium azide. This antibody is purified through a protein A column, followed by peptide affinity purification.
Storage	Maintain refrigerated at 2-8°C for up to 2 weeks. For long term storage store at -20°C in small aliquots to prevent freeze-thaw cycles.
Precautions	ACTN2 Antibody (C-term) is for research use only and not for use in diagnostic or therapeutic procedures.

Protein Information

Name	ACTN2
Function	F-actin cross-linking protein which is thought to anchor actin to a variety of intracellular structures. This is a bundling protein.

Cellular Location Cytoplasm, myofibril, sarcomere, Z line. Note=Colocalizes with MYOZ1 and FLNC at the Z-lines of skeletal muscle

Tissue Location Expressed in both skeletal and cardiac muscle.

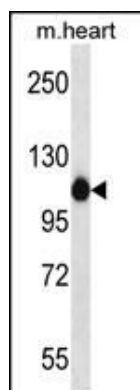
Background

Alpha actinins belong to the spectrin gene superfamily which represents a diverse group of cytoskeletal proteins, including the alpha and beta spectrins and dystrophins. Alpha actinin is an actin-binding protein with multiple roles in different cell types. In nonmuscle cells, the cytoskeletal isoform is found along microfilament bundles and adherens-type junctions, where it is involved in binding actin to the membrane. In contrast, skeletal, cardiac, and smooth muscle isoforms are localized to the Z-disc and analogous dense bodies, where they help anchor the myofibrillar actin filaments. This gene encodes a muscle-specific, alpha actinin isoform that is expressed in both skeletal and cardiac muscles.

References

Saus, E., et al. J Psychiatr Res 44(14):971-978(2010)
Rose, J.E., et al. Mol. Med. 16 (7-8), 247-253 (2010) :
Zimmerman, R.S., et al. Genet. Med. 12(5):268-278(2010)
Joslyn, G., et al. Alcohol. Clin. Exp. Res. 34(5):800-812(2010)
Chiu, C., et al. J. Am. Coll. Cardiol. 55(11):1127-1135(2010)

Images



ACTN2 Antibody (C-term) (Cat. #AP14950b) western blot analysis in mouse heart tissue lysates (35ug/lane). This demonstrates the ACTN2 antibody detected the ACTN2 protein (arrow).

Please note: All products are 'FOR RESEARCH USE ONLY. NOT FOR USE IN DIAGNOSTIC OR THERAPEUTIC PROCEDURES'.