

LASP1 Antibody (Center)

Affinity Purified Rabbit Polyclonal Antibody (Pab)

Catalog # AP14992c

Product Information

Application	WB, E
Primary Accession	Q14847
Other Accession	NP_006139.1
Reactivity	Human
Host	Rabbit
Clonality	Polyclonal
Isotype	Rabbit IgG
Clone Names	RB35232
Calculated MW	29717
Antigen Region	120-148

Additional Information

Gene ID	3927
Other Names	LIM and SH3 domain protein 1, LASP-1, Metastatic lymph node gene 50 protein, MLN 50, LASP1, MLN50
Target/Specificity	This LASP1 antibody is generated from rabbits immunized with a KLH conjugated synthetic peptide between 120-148 amino acids from the Central region of human LASP1.
Dilution	WB~~1:1000 E~~Use at an assay dependent concentration.
Format	Purified polyclonal antibody supplied in PBS with 0.09% (W/V) sodium azide. This antibody is purified through a protein A column, followed by peptide affinity purification.
Storage	Maintain refrigerated at 2-8°C for up to 2 weeks. For long term storage store at -20°C in small aliquots to prevent freeze-thaw cycles.
Precautions	LASP1 Antibody (Center) is for research use only and not for use in diagnostic or therapeutic procedures.

Protein Information

Name	LASP1
Synonyms	MLN50
Function	Plays an important role in the regulation of dynamic actin- based,

cytoskeletal activities. Agonist-dependent changes in LASP1 phosphorylation may also serve to regulate actin-associated ion transport activities, not only in the parietal cell but also in certain other F-actin-rich secretory epithelial cell types (By similarity).

Cellular Location

Cytoplasm, cell cortex. Cytoplasm, cytoskeleton. Note=Associated with the F-actin rich cortical cytoskeleton.

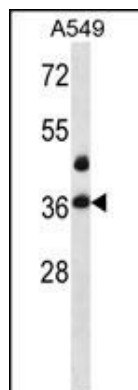
Background

This gene encodes a member of a LIM protein subfamily characterized by a LIM motif and a domain of Src homology region 3. The encoded protein functions as an actin-binding protein and possibly in cytoskeletal organization.

References

Traenka, C., et al. Cancer Res. 70(20):8003-8014(2010)
Zhao, L., et al. FEBS J. 277(20):4195-4204(2010)
Zhao, L., et al. Gut 59(9):1226-1235(2010)
Rose, J.E., et al. Mol. Med. 16 (7-8), 247-253 (2010) :
Frietsch, J.J., et al. Br. J. Cancer 102(11):1645-1653(2010)

Images



LASP1 Antibody (Center) (Cat. #AP14992c) western blot analysis in A549 cell line lysates (35ug/lane). This demonstrates the LASP1 antibody detected the LASP1 protein (arrow).

Please note: All products are 'FOR RESEARCH USE ONLY. NOT FOR USE IN DIAGNOSTIC OR THERAPEUTIC PROCEDURES'.