

# Mouse Olfr545 Antibody (C-term)

Affinity Purified Rabbit Polyclonal Antibody (Pab)

Catalog # AP15023a

## Product Information

---

<b>Application</b>	WB, E
<b>Primary Accession</b>	<a href="#">Q9WU94</a>
<b>Reactivity</b>	Mouse
<b>Host</b>	Rabbit
<b>Clonality</b>	Polyclonal
<b>Isotype</b>	Rabbit IgG
<b>Clone Names</b>	RB34983
<b>Calculated MW</b>	35033
<b>Antigen Region</b>	281-308

## Additional Information

---

<b>Gene ID</b>	258837
<b>Other Names</b>	Olfr545
<b>Target/Specificity</b>	This Mouse Olfr545 antibody is generated from rabbits immunized with a KLH conjugated synthetic peptide between 281-308 amino acids from the C-terminal region of mouse Olfr545.
<b>Dilution</b>	WB~~1:1000 E~~Use at an assay dependent concentration.
<b>Format</b>	Purified polyclonal antibody supplied in PBS with 0.09% (W/V) sodium azide. This antibody is purified through a protein A column, followed by peptide affinity purification.
<b>Storage</b>	Maintain refrigerated at 2-8°C for up to 2 weeks. For long term storage store at -20°C in small aliquots to prevent freeze-thaw cycles.
<b>Precautions</b>	Mouse Olfr545 Antibody (C-term) is for research use only and not for use in diagnostic or therapeutic procedures.

## Protein Information

---

<b>Name</b>	Q9WU94
<b>Cellular Location</b>	Cell membrane {ECO:0000256 ARBA:ARBA00004651, ECO:0000256 RuleBase:RU363047}; Multi-pass membrane protein {ECO:0000256 ARBA:ARBA00004651, ECO:0000256 RuleBase:RU363047}

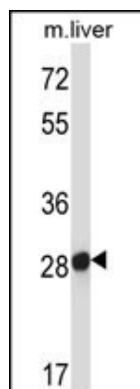
## Background

---

The olfactory receptor proteins are members of a large family of G-protein-coupled receptors (GPCR) arising from single coding-exon genes. Olfactory receptors share a 7-transmembrane domain structure with many neurotransmitter and hormone receptors and are responsible for the recognition and G protein-mediated transduction of odorant signals. The olfactory receptor gene family is the largest in the genome.

## Images

---



Mouse Olfr545 Antibody (Cat. #AP15023a) western blot analysis in mouse liver tissue lysates (35ug/lane). This demonstrates the Olfr545 antibody detected the Olfr545 protein (arrow).

Please note: All products are 'FOR RESEARCH USE ONLY. NOT FOR USE IN DIAGNOSTIC OR THERAPEUTIC PROCEDURES'.