

# CTBP1 Antibody (C-term)

Affinity Purified Rabbit Polyclonal Antibody (Pab)

Catalog # AP16004b

## Product Information

---

Application	WB, E
Primary Accession	<a href="#">Q13363</a>
Other Accession	<a href="#">NP_001319.1</a> , <a href="#">NP_001012632.1</a>
Reactivity	Human, Mouse, Rat
Host	Rabbit
Clonality	Polyclonal
Isotype	Rabbit IgG
Calculated MW	47535
Antigen Region	413-440

## Additional Information

---

Gene ID	1487
Other Names	C-terminal-binding protein 1, CtBP1, 111-, CTBP1, CTBP
Target/Specificity	This CTBP1 antibody is generated from rabbits immunized with a KLH conjugated synthetic peptide between 413-440 amino acids from the C-terminal region of human CTBP1.
Dilution	WB~~1:1000 E~~Use at an assay dependent concentration.
Format	Purified polyclonal antibody supplied in PBS with 0.05% (V/V) Proclin 300. This antibody is purified through a protein A column, followed by peptide affinity purification.
Storage	Maintain refrigerated at 2-8°C for up to 2 weeks. For long term storage store at -20°C in small aliquots to prevent freeze-thaw cycles.
Precautions	CTBP1 Antibody (C-term) is for research use only and not for use in diagnostic or therapeutic procedures.

## Protein Information

---

Name	CTBP1
Synonyms	CTBP
Function	Corepressor targeting diverse transcription regulators such as GLIS2 or BCL6. Has dehydrogenase activity. Involved in controlling the equilibrium between tubular and stacked structures in the Golgi complex. Functions in

brown adipose tissue (BAT) differentiation.

**Cellular Location**

Cytoplasm. Nucleus

**Tissue Location**

Expressed in germinal center B-cells.

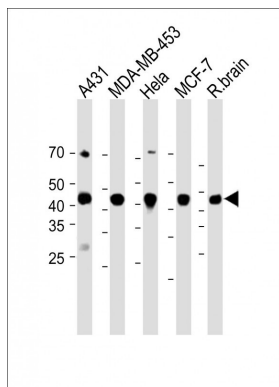
## Background

This gene encodes a protein that binds to the C-terminus of adenovirus E1A proteins. This phosphoprotein is a transcriptional repressor and may play a role during cellular proliferation. This protein and the product of a second closely related gene, CTBP2, can dimerize. Both proteins can also interact with a polycomb group protein complex which participates in regulation of gene expression during development. Alternative splicing of transcripts from this gene results in multiple transcript variants.

## References

Roukens, M.G., et al. Nat. Cell Biol. 12(10):933-942(2010)  
Choi, H.J., et al. Biochem. Biophys. Res. Commun. 400(3):396-402(2010)  
Merrill, J.C., et al. J. Mol. Biol. 398(5):657-671(2010)  
Davila, S., et al. Genes Immun. 11(3):232-238(2010)  
Yoshida, T., et al. Int. J. Mol. Med. 25(4):649-656(2010)

## Images



All lanes: Anti-CTBP1 Antibody (C-term) at 1:2000 dilution  
Lane 1: A431 whole cell lysate Lane 2: MDA-MB-453 whole cell lysate Lane 3: HeLa whole cell lysate Lane 4: MCF-7 whole cell lysate Lane 5: Rat brain lysate Lysates/proteins at 20 µg per lane. Secondary: Goat Anti-Rabbit IgG, (H+L), Peroxidase conjugated (ASP1615) at 1/15000 dilution. Observed band size: 47 KDa Blocking/Dilution buffer: 5% NFDM/TBST.

Please note: All products are 'FOR RESEARCH USE ONLY. NOT FOR USE IN DIAGNOSTIC OR THERAPEUTIC PROCEDURES'.