

ARRDC1 Antibody (Center)

Affinity Purified Rabbit Polyclonal Antibody (Pab)

Catalog # AP16008c

Product Information

Application	WB, E
Primary Accession	Q8N5I2
Other Accession	NP_689498.1
Reactivity	Mouse
Host	Rabbit
Clonality	Polyclonal
Isotype	Rabbit IgG
Clone Names	RB27192
Calculated MW	45981
Antigen Region	136-164

Additional Information

Gene ID	92714
Other Names	Arrestin domain-containing protein 1, ARRDC1
Target/Specificity	This ARRDC1 antibody is generated from rabbits immunized with a KLH conjugated synthetic peptide between 136-164 amino acids from the Central region of human ARRDC1.
Dilution	WB~~1:1000 E~~Use at an assay dependent concentration.
Format	Purified polyclonal antibody supplied in PBS with 0.09% (W/V) sodium azide. This antibody is purified through a protein A column, followed by peptide affinity purification.
Storage	Maintain refrigerated at 2-8°C for up to 2 weeks. For long term storage store at -20°C in small aliquots to prevent freeze-thaw cycles.
Precautions	ARRDC1 Antibody (Center) is for research use only and not for use in diagnostic or therapeutic procedures.

Protein Information

Name	ARRDC1 (HGNC:28633)
Function	Functions as an adapter recruiting ubiquitin-protein ligases to their specific substrates (PubMed: 23886940 , PubMed: 27462458). Through an ubiquitination-dependent mechanism plays for instance a role in the incorporation of SLC11A2 into extracellular vesicles (PubMed: 27462458).

More generally, plays a role in the extracellular transport of proteins between cells through the release in the extracellular space of microvesicles (PubMed:[22315426](#)). By participating in the ITCH-mediated ubiquitination and subsequent degradation of NOTCH1, negatively regulates the NOTCH signaling pathway (PubMed:[23886940](#)).

Cellular Location

Cell membrane. Note=Also found in extracellular vesicles different from exosomes.

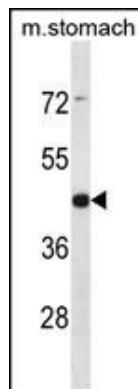
Background

ARRDC1 belongs to the arrestin family of proteins.

References

Humphray, S.J., et al. Nature 429(6990):369-374(2004)

Images



ARRDC1 Antibody (Center) (Cat. #AP16008c) western blot analysis in mouse stomach tissue lysates (35ug/lane). This demonstrates the ARRDC1 antibody detected the ARRDC1 protein (arrow).

Please note: All products are 'FOR RESEARCH USE ONLY. NOT FOR USE IN DIAGNOSTIC OR THERAPEUTIC PROCEDURES'.