

# FAU Antibody (N-term)

Purified Rabbit Polyclonal Antibody (Pab)

Catalog # AP1600a

## Product Information

---

<b>Application</b>	WB, IHC-P, E
<b>Primary Accession</b>	<a href="#">P35544</a>
<b>Reactivity</b>	Human
<b>Host</b>	Rabbit
<b>Clonality</b>	Polyclonal
<b>Isotype</b>	Rabbit IgG
<b>Clone Names</b>	RB11823
<b>Antigen Region</b>	1-30

## Additional Information

---

<b>Other Names</b>	Ubiquitin-like protein FUBI, FAU
<b>Target/Specificity</b>	This FAU antibody is generated from rabbits immunized with a KLH conjugated synthetic peptide between 1-30 amino acids from the N-terminal region of human FAU.
<b>Dilution</b>	WB~~1:1000 IHC-P~~1:100~500 E~~Use at an assay dependent concentration.
<b>Format</b>	Purified polyclonal antibody supplied in PBS with 0.09% (W/V) sodium azide. This antibody is prepared by Saturated Ammonium Sulfate (SAS) precipitation followed by dialysis against PBS.
<b>Storage</b>	Maintain refrigerated at 2-8°C for up to 2 weeks. For long term storage store at -20°C in small aliquots to prevent freeze-thaw cycles.
<b>Precautions</b>	FAU Antibody (N-term) is for research use only and not for use in diagnostic or therapeutic procedures.

## Protein Information

---

### Background

---

FUBI is the cellular homolog of the fox sequence in the Finkel-Biskis-Reilly murine sarcoma virus (FBR-MuSV). It is a fusion protein consisting of the ubiquitin-like protein fubi at the N terminus and ribosomal protein S30 at the C terminus. It has been proposed that the fusion protein is post-translationally processed to generate free fubi and free ribosomal protein S30. Fubi is a member of the ubiquitin family, and ribosomal protein S30 belongs to the S30E family of ribosomal proteins. Whereas the function of fubi is currently unknown, ribosomal protein S30 is a component of the 40S subunit of the cytoplasmic ribosome.

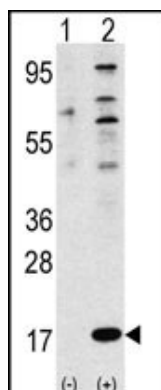
## References

---

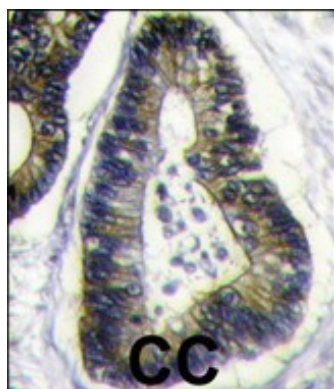
Rossman, T.G., et al., *Oncogene* 22(12):1817-1821 (2003).  
Kenmochi, N., et al., *Genome Res.* 8(5):509-523 (1998).  
Vladimirov, S.N., et al., *Eur. J. Biochem.* 239(1):144-149 (1996).  
Kas, K., et al., *Genomics* 17(2):387-392 (1993).  
Michiels, L., et al., *Oncogene* 8(9):2537-2546 (1993).

## Images

---



Western blot analysis of FUBI Antibody (N-term) polyclonal antibody(Cat.#AP1600a)(arrow). 293 cell lysates (2 ug/lane) either nontransfected (Lane 1) or transiently transfected with the FUBI gene (Lane 2) (Origene Technologies).



Formalin-fixed and paraffin-embedded human colon carcinoma reacted with FUBI Antibody (N-term)(Cat.#AP1600a), which was peroxidase-conjugated to the secondary antibody, followed by DAB staining. This data demonstrates the use of this antibody for immunohistochemistry; clinical relevance has not been evaluated.

Please note: All products are 'FOR RESEARCH USE ONLY. NOT FOR USE IN DIAGNOSTIC OR THERAPEUTIC PROCEDURES'.