

FAU Antibody

Affinity Purified Rabbit Polyclonal Antibody (Pab)

Catalog # AP1600d

Product Information

Application	WB, FC, E
Primary Accession	P35544
Reactivity	Human
Host	Rabbit
Clonality	Polyclonal
Isotype	Rabbit IgG
Clone Names	RB22728

Additional Information

Other Names	Ubiquitin-like protein FUBI, FAU
Target/Specificity	This FAU antibody is generated from rabbits immunized with human FAU recombinant protein.
Dilution	WB~~1:1000 FC~~1:10~50 E~~Use at an assay dependent concentration.
Format	Purified polyclonal antibody supplied in PBS with 0.09% (W/V) sodium azide. This antibody is purified through a protein A column, followed by peptide affinity purification.
Storage	Maintain refrigerated at 2-8°C for up to 2 weeks. For long term storage store at -20°C in small aliquots to prevent freeze-thaw cycles.
Precautions	FAU Antibody is for research use only and not for use in diagnostic or therapeutic procedures.

Protein Information

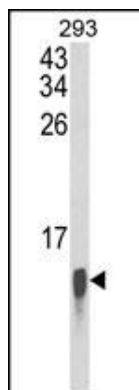
Background

FUBI is the cellular homolog of the fox sequence in the Finkel-Biskis-Reilly murine sarcoma virus (FBR-MuSV). It is a fusion protein consisting of the ubiquitin-like protein fubi at the N terminus and ribosomal protein S30 at the C terminus. It has been proposed that the fusion protein is post-translationally processed to generate free fubi and free ribosomal protein S30. Fubi is a member of the ubiquitin family, and ribosomal protein S30 belongs to the S30E family of ribosomal proteins. Whereas the function of fubi is currently unknown, ribosomal protein S30 is a component of the 40S subunit of the cytoplasmic ribosome.

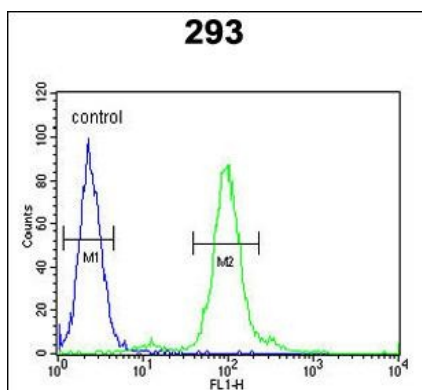
References

Rossman, T.G., et al., *Oncogene* 22(12):1817-1821 (2003).
Kenmochi, N., et al., *Genome Res.* 8(5):509-523 (1998).
Vladimirov, S.N., et al., *Eur. J. Biochem.* 239(1):144-149 (1996).
Kas, K., et al., *Genomics* 17(2):387-392 (1993).
Michiels, L., et al., *Oncogene* 8(9):2537-2546 (1993).

Images



Western blot analysis of FAU Antibody (Cat. #AP1600d) in 293 cell line lysates (35ug/lane). FAU (arrow) was detected using the purified Pab.



FAU Antibody (Cat. #AP1600d) flow cytometric analysis of 293 cells (right histogram) compared to a negative control cell (left histogram). FITC-conjugated goat-anti-rabbit secondary antibodies were used for the analysis.

Please note: All products are 'FOR RESEARCH USE ONLY. NOT FOR USE IN DIAGNOSTIC OR THERAPEUTIC PROCEDURES'.