

P2RX2 Antibody (N-term)

Affinity Purified Rabbit Polyclonal Antibody (Pab)

Catalog # AP16011a

Product Information

Application	WB, E
Primary Accession	Q9UBL9
Other Accession	NP_057402.1 , NP_777362.1 , NP_733783.1
Reactivity	Human
Host	Rabbit
Clonality	Polyclonal
Isotype	Rabbit IgG
Clone Names	RB30282
Calculated MW	51754
Antigen Region	81-109

Additional Information

Gene ID	22953
Other Names	P2X purinoceptor 2, P2X2, ATP receptor, Purinergic receptor, P2RX2, P2X2
Target/Specificity	This P2RX2 antibody is generated from rabbits immunized with a KLH conjugated synthetic peptide between 81-109 amino acids from the N-terminal region of human P2RX2.
Dilution	WB~~1:1000 E~~Use at an assay dependent concentration.
Format	Purified polyclonal antibody supplied in PBS with 0.09% (W/V) sodium azide. This antibody is purified through a protein A column, followed by peptide affinity purification.
Storage	Maintain refrigerated at 2-8°C for up to 2 weeks. For long term storage store at -20°C in small aliquots to prevent freeze-thaw cycles.
Precautions	P2RX2 Antibody (N-term) is for research use only and not for use in diagnostic or therapeutic procedures.

Protein Information

Name	P2RX2 (HGNC:15459)
Synonyms	P2X2
Function	ATP-gated nonselective transmembrane cation channel permeable to potassium, sodium and calcium (PubMed: 10570044 , PubMed: 31636190).

Activation by extracellular ATP induces a variety of cellular responses, such as excitatory postsynaptic responses in sensory neurons, neuromuscular junctions (NMJ) formation, hearing, perception of taste and peristalsis (By similarity). In the inner ear, regulates sound transduction and auditory neurotransmission, outer hair cell electromotility, inner ear gap junctions, and K(+) recycling (PubMed:[23345450](#)). Mediates synaptic transmission between neurons and from neurons to smooth muscle (By similarity).

Cellular Location

Cell membrane; Multi-pass membrane protein {ECO:0000250|UniProtKB:P56373}. Note=Localizes to the apical membranes of hair cells in the organ of Corti.

Tissue Location

Expressed in both the central and peripheral nervous system, as well as in the pituitary gland

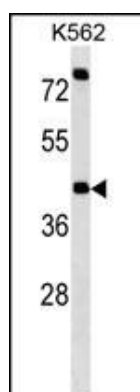
Background

The product of this gene belongs to the family of purinoceptors for ATP. This receptor functions as a ligand-gated ion channel. Binding to ATP mediates synaptic transmission between neurons and from neurons to smooth muscle. Six transcript variants encoding six distinct isoforms have been identified for this gene.

References

Allsopp, R.C., et al. J. Biol. Chem. 285(43):32770-32777(2010)
Decker, D.A., et al. Neurogastroenterol. Motil. 22(8):901-908(2010)
Coddou, C., et al. J. Neurosci. 29(39):12284-12291(2009)
Pannek, J., et al. Spinal Cord 47(7):561-564(2009)
Chaumont, S., et al. Sci Signal 1 (41), RA8 (2008) :

Images



P2RX2 Antibody (N-term) (Cat. #AP16011a) western blot analysis in K562 cell line lysates (35ug/lane). This demonstrates the P2RX2 antibody detected the P2RX2 protein (arrow).

Please note: All products are 'FOR RESEARCH USE ONLY. NOT FOR USE IN DIAGNOSTIC OR THERAPEUTIC PROCEDURES'.