

PBX2 Antibody (Center)

Affinity Purified Rabbit Polyclonal Antibody (Pab)

Catalog # AP16016C

Product Information

Application	WB, E
Primary Accession	P40425
Other Accession	Q35984 , NP_002577.2
Reactivity	Human, Mouse
Host	Rabbit
Clonality	Polyclonal
Isotype	Rabbit IgG
Clone Names	RB34125
Calculated MW	45881
Antigen Region	181-210

Additional Information

Gene ID	5089
Other Names	Pre-B-cell leukemia transcription factor 2, Homeobox protein PBX2, Protein G17, PBX2, G17
Target/Specificity	This PBX2 antibody is generated from rabbits immunized with a KLH conjugated synthetic peptide between 181-210 amino acids from the Central region of human PBX2.
Dilution	WB~~1:2000 E~~Use at an assay dependent concentration.
Format	Purified polyclonal antibody supplied in PBS with 0.09% (W/V) sodium azide. This antibody is purified through a protein A column, followed by peptide affinity purification.
Storage	Maintain refrigerated at 2-8°C for up to 2 weeks. For long term storage store at -20°C in small aliquots to prevent freeze-thaw cycles.
Precautions	PBX2 Antibody (Center) is for research use only and not for use in diagnostic or therapeutic procedures.

Protein Information

Name	PBX2
Synonyms	G17
Function	Transcriptional activator that binds the sequence 5'- ATCAATCAA-3'.

Activates transcription of PF4 in complex with MEIS1.

Cellular Location

Nucleus.

Tissue Location

Ubiquitously expressed.

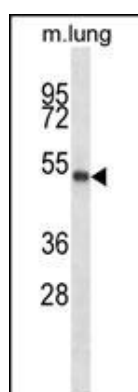
Background

This gene encodes a ubiquitously expressed member of the TALE/PBX homeobox family. It was identified by its similarity to a homeobox gene which is involved in t(1;19) translocation in acute pre-B-cell leukemias. This protein is a transcriptional activator which binds to the TLX1 promoter. The gene is located within the major histocompatibility complex (MHC) on chromosome 6. [provided by RefSeq].

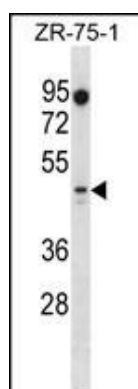
References

Bailey, S.D., et al. Diabetes Care 33(10):2250-2253(2010)
Ucisik-Akkaya, E., et al. Mol. Hum. Reprod. 16(10):770-777(2010)
Qiu, Y., et al. Int. J. Oncol. 36(3):651-663(2010)
Ban, H.J., et al. BMC Genet. 11, 26 (2010) :
Talmud, P.J., et al. Am. J. Hum. Genet. 85(5):628-642(2009)

Images



PBX2 Antibody (Center) (Cat. #AP16016c) western blot analysis in mouse lung tissue lysates (35ug/lane). This demonstrates the PBX2 antibody detected the PBX2 protein (arrow).



PBX2 Antibody (Center) (Cat. #AP16016c) western blot analysis in ZR-75-1 cell line lysates (35ug/lane). This demonstrates the PBX2 antibody detected the PBX2 protein (arrow).

Please note: All products are 'FOR RESEARCH USE ONLY. NOT FOR USE IN DIAGNOSTIC OR THERAPEUTIC PROCEDURES'.