

# SPINT1 Antibody (Center)

Affinity Purified Rabbit Polyclonal Antibody (Pab)

Catalog # AP16020c

## Product Information

---

Application	WB, E
Primary Accession	<a href="#">O43278</a>
Other Accession	<a href="#">NP_857593.1</a> , <a href="#">NP_001027539.1</a>
Reactivity	Human
Host	Rabbit
Clonality	Polyclonal
Isotype	Rabbit IgG
Clone Names	RB34617
Calculated MW	58398
Antigen Region	178-207

## Additional Information

---

Gene ID	6692
Other Names	Kunitz-type protease inhibitor 1, Hepatocyte growth factor activator inhibitor type 1, HAI-1, SPINT1, HAI1
Target/Specificity	This SPINT1 antibody is generated from rabbits immunized with a KLH conjugated synthetic peptide between 178-207 amino acids from the Central region of human SPINT1.
Dilution	WB~~1:1000 E~~Use at an assay dependent concentration.
Format	Purified polyclonal antibody supplied in PBS with 0.09% (W/V) sodium azide. This antibody is purified through a protein A column, followed by peptide affinity purification.
Storage	Maintain refrigerated at 2-8°C for up to 2 weeks. For long term storage store at -20°C in small aliquots to prevent freeze-thaw cycles.
Precautions	SPINT1 Antibody (Center) is for research use only and not for use in diagnostic or therapeutic procedures.

## Protein Information

---

Name	SPINT1
Synonyms	HAI1
Function	Inhibitor of HGFAC (PubMed: <a href="#">9045658</a> ). Inhibits serine protease activity of

ST14/matriptase in vitro (PubMed:[28710277](#)). Inhibits serine protease activity of TMPRSS13, via the BPTI/Kunitz inhibitor 1 domain (PubMed:[20977675](#)).

## Cellular Location

Secreted. Cytoplasm. Cell membrane

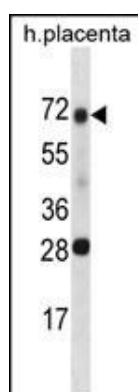
## Background

The protein encoded by this gene is a member of the Kunitz family of serine protease inhibitors. The protein is a potent inhibitor specific for HGF activator and is thought to be involved in the regulation of the proteolytic activation of HGF in injured tissues. Alternative splicing results in multiple variants encoding different isoforms.

## References

Chen, Y.W., et al. J. Biol. Chem. 285(41):31755-31762(2010)  
Kauppinen, J.M., et al. Cancer Epidemiol. Biomarkers Prev. 19(9):2133-2142(2010)  
Nakamura, K., et al. Int. J. Oncol. 35(2):239-248(2009)  
Wang, J.K., et al. Am. J. Physiol., Cell Physiol. 297 (2), C459-C470 (2009) :  
Cheng, H., et al. Cancer Res. 69(5):1828-1835(2009)

## Images



SPINT1 Antibody (Center) (Cat. #AP16020c) western blot analysis in human placenta tissue lysates (35ug/lane). This demonstrates the SPINT1 antibody detected the SPINT1 protein (arrow).

Please note: All products are 'FOR RESEARCH USE ONLY. NOT FOR USE IN DIAGNOSTIC OR THERAPEUTIC PROCEDURES'.