

P2RY6 Antibody (C-term)

Affinity Purified Rabbit Polyclonal Antibody (Pab)

Catalog # AP16054b

Product Information

Application	WB, E
Primary Accession	Q15077
Other Accession	NP_789768.1 , NP_789767.1 , NP_004145.1
Reactivity	Human
Host	Rabbit
Clonality	Polyclonal
Isotype	Rabbit IgG
Clone Names	RB35296
Calculated MW	36429
Antigen Region	286-314

Additional Information

Gene ID	5031
Other Names	P2Y purinoceptor 6, P2Y6, P2RY6
Target/Specificity	This P2RY6 antibody is generated from rabbits immunized with a KLH conjugated synthetic peptide between 286-314 amino acids from the C-terminal region of human P2RY6.
Dilution	WB~~1:1000 E~~Use at an assay dependent concentration.
Format	Purified polyclonal antibody supplied in PBS with 0.09% (W/V) sodium azide. This antibody is purified through a protein A column, followed by peptide affinity purification.
Storage	Maintain refrigerated at 2-8°C for up to 2 weeks. For long term storage store at -20°C in small aliquots to prevent freeze-thaw cycles.
Precautions	P2RY6 Antibody (C-term) is for research use only and not for use in diagnostic or therapeutic procedures.

Protein Information

Name	P2RY6
Function	Receptor for extracellular UDP > UTP > ATP. The activity of this receptor is mediated by G proteins which activate a phosphatidylinositol-calcium second messenger system.

Cellular Location

Cell membrane; Multi-pass membrane protein.

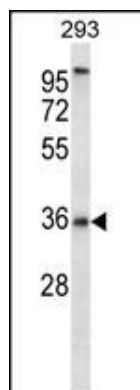
Background

The product of this gene belongs to the family of G-protein coupled receptors. This family has several receptor subtypes with different pharmacological selectivity, which overlaps in some cases, for various adenosine and uridine nucleotides. This receptor is responsive to UDP, partially responsive to UTP and ADP, and not responsive to ATP. Four transcript variants encoding the same isoform have been identified for this gene. [provided by RefSeq].

References

Rose, J.E., et al. Mol. Med. 16 (7-8), 247-253 (2010) :
Ben Yebdri, F., et al. Eur. J. Immunol. 39(10):2885-2894(2009)
Wong, A.M., et al. Am. J. Respir. Cell Mol. Biol. 40(6):733-745(2009)
Jiang, Y., et al. J. Immunol. 182(2):1129-1137(2009)
Nishida, M., et al. EMBO J. 27(23):3104-3115(2008)

Images



P2RY6 Antibody (C-term) (Cat. #AP16054b) western blot analysis in 293 cell line lysates (35ug/lane). This demonstrates the P2RY6 antibody detected the P2RY6 protein (arrow).

Please note: All products are 'FOR RESEARCH USE ONLY. NOT FOR USE IN DIAGNOSTIC OR THERAPEUTIC PROCEDURES'.