

# NUDC Antibody (Center)

Affinity Purified Rabbit Polyclonal Antibody (Pab)

Catalog # AP16056c

## Product Information

---

Application	WB, E
Primary Accession	<a href="#">Q9Y266</a>
Other Accession	<a href="#">NP_006591.1</a>
Reactivity	Human
Host	Rabbit
Clonality	Polyclonal
Isotype	Rabbit IgG
Clone Names	RB35299
Calculated MW	38243
Antigen Region	105-133

## Additional Information

---

Gene ID	10726
Other Names	Nuclear migration protein nudC, Nuclear distribution protein C homolog, NUDC
Target/Specificity	This NUDC antibody is generated from rabbits immunized with a KLH conjugated synthetic peptide between 105-133 amino acids from the Central region of human NUDC.
Dilution	WB~~1:1000 E~~Use at an assay dependent concentration.
Format	Purified polyclonal antibody supplied in PBS with 0.09% (W/V) sodium azide. This antibody is purified through a protein A column, followed by peptide affinity purification.
Storage	Maintain refrigerated at 2-8°C for up to 2 weeks. For long term storage store at -20°C in small aliquots to prevent freeze-thaw cycles.
Precautions	NUDC Antibody (Center) is for research use only and not for use in diagnostic or therapeutic procedures.

## Protein Information

---

Name	NUDC
Function	Plays a role in neurogenesis and neuronal migration (By similarity). Necessary for correct formation of mitotic spindles and chromosome separation during mitosis (PubMed: <a href="#">12679384</a> , PubMed: <a href="#">12852857</a> ,

PubMed:[25789526](#)). Necessary for cytokinesis and cell proliferation (PubMed:[12679384](#), PubMed:[12852857](#)).

#### Cellular Location

Cytoplasm, cytoskeleton. Nucleus. Cytoplasm, cytoskeleton, spindle. Midbody  
Note=In a filamentous pattern adjacent to the nucleus of migrating cerebellar granule cells. Colocalizes with tubulin and dynein and with the microtubule organizing center. Distributed throughout the cytoplasm of non-migrating cells. A small proportion is nuclear, in a punctate pattern. Localizes to the mitotic spindle in a EML4-dependent manner (PubMed:25789526).

#### Tissue Location

Ubiquitous. Highly expressed in fetal liver, kidney, lung and brain. Highly expressed in adult pancreas, kidney, skeletal muscle, liver, lung, placenta, prostate, brain and heart

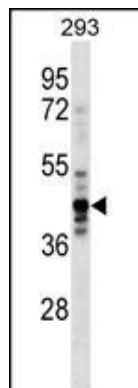
## Background

NudC was first identified as a regulator of nuclear movement in the asexual reproductive cycle of the filamentous fungus *Aspergillus nidulans*. Human NUDC is a nuclear movement protein that associates with dynein (see DYNC1H1; MIM 600112) (Aumais et al., 2003 [PubMed 12679384]).

## References

Zhu, X.J., et al. J. Biol. Chem. 285(39):29903-29910(2010)  
Chen, W.M., et al. J. Biol. Chem. 285(34):26697-26709(2010)  
Pang, S.F., et al. Exp. Cell Res. 315(20):3563-3573(2009)  
Tang, Y.S., et al. Leukemia 22(5):1018-1025(2008)  
Zhang, Y.P., et al. Exp. Cell Res. 313(15):3210-3221(2007)

## Images



NUDC Antibody (Center) (Cat. #AP16056c) western blot analysis in 293 cell line lysates (35ug/lane). This demonstrates the NUDC antibody detected the NUDC protein (arrow).

Please note: All products are 'FOR RESEARCH USE ONLY. NOT FOR USE IN DIAGNOSTIC OR THERAPEUTIC PROCEDURES'.