

Mouse Cabc1 Antibody (Center)

Affinity Purified Rabbit Polyclonal Antibody (Pab)

Catalog # AP16067c

Product Information

| | |
|-------------------|---|
| Application | WB, E |
| Primary Accession | Q60936 |
| Other Accession | Q5BJQ0 , NP_075830.2 , NP_001156762.1 |
| Reactivity | Mouse |
| Predicted | Rat |
| Host | Rabbit |
| Clonality | Polyclonal |
| Isotype | Rabbit IgG |
| Clone Names | RB35456 |
| Calculated MW | 71743 |
| Antigen Region | 396-423 |

Additional Information

| | |
|--------------------|--|
| Gene ID | 67426 |
| Other Names | Chaperone activity of bc1 complex-like, mitochondrial, Chaperone-ABC1-like, 2711-, aarF domain-containing protein kinase 3, Adck3, Cabc1 |
| Target/Specificity | This Mouse Cabc1 antibody is generated from rabbits immunized with a KLH conjugated synthetic peptide between 396-423 amino acids from the Central region of mouse Cabc1. |
| Dilution | WB~~1:1000 E~~Use at an assay dependent concentration. |
| Format | Purified polyclonal antibody supplied in PBS with 0.09% (W/V) sodium azide. This antibody is purified through a protein A column, followed by peptide affinity purification. |
| Storage | Maintain refrigerated at 2-8°C for up to 2 weeks. For long term storage store at -20°C in small aliquots to prevent freeze-thaw cycles. |
| Precautions | Mouse Cabc1 Antibody (Center) is for research use only and not for use in diagnostic or therapeutic procedures. |

Protein Information

| | |
|----------|---|
| Name | Coq8a {ECO:0000250 UniProtKB:Q8NI60} |
| Function | Atypical kinase involved in the biosynthesis of coenzyme Q, also named ubiquinone, an essential lipid-soluble electron transporter for aerobic cellular |

respiration (PubMed:[27499294](#)). Its substrate specificity is still unclear: may act as a protein kinase that mediates phosphorylation of COQ3 (By similarity). According to other reports, acts as a small molecule kinase, possibly a lipid kinase that phosphorylates a prenyl lipid in the ubiquinone biosynthesis pathway, as suggested by its ability to bind coenzyme Q lipid intermediates (By similarity). However, the small molecule kinase activity was not confirmed by another publication (By similarity). Shows an unusual selectivity for binding ADP over ATP (By similarity).

| | |
|--------------------------|---|
| Cellular Location | Mitochondrion membrane {ECO:0000250 UniProtKB:Q8NI60}; Single-pass membrane protein |
| Tissue Location | Present in various tissues (at protein level). |

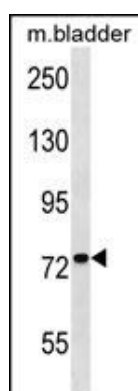
Background

Cabc1 may be a chaperone-like protein essential for the proper conformation and functioning of protein complexes in the respiratory chain.

References

Pagliarini, D.J., et al. Cell 134(1):112-123(2008)
Garcia-Frigola, C., et al. Brain Res. Mol. Brain Res. 122(2):133-150(2004)

Images



Mouse Cabc1 Antibody (Center) (Cat. #AP16067c) western blot analysis in mouse bladder tissue lysates (35ug/lane). This demonstrates the Cabc1 antibody detected the Cabc1 protein (arrow).

Please note: All products are 'FOR RESEARCH USE ONLY. NOT FOR USE IN DIAGNOSTIC OR THERAPEUTIC PROCEDURES'.