

# Mouse Cdkl4 Antibody (C-term)

Affinity Purified Rabbit Polyclonal Antibody (Pab)

Catalog # AP16075b

## Product Information

---

<b>Application</b>	WB, E
<b>Primary Accession</b>	<a href="#">Q3TZA2</a>
<b>Other Accession</b>	<a href="#">NP_001028615.1</a>
<b>Reactivity</b>	Human, Mouse
<b>Host</b>	Rabbit
<b>Clonality</b>	Polyclonal
<b>Isotype</b>	Rabbit IgG
<b>Clone Names</b>	RB35474
<b>Calculated MW</b>	39446
<b>Antigen Region</b>	272-299

## Additional Information

---

<b>Gene ID</b>	381113
<b>Other Names</b>	Cyclin-dependent kinase-like 4, Cdkl4, Gm942
<b>Target/Specificity</b>	This Mouse Cdkl4 antibody is generated from rabbits immunized with a KLH conjugated synthetic peptide between 272-299 amino acids from the C-terminal region of mouse Cdkl4.
<b>Dilution</b>	WB~~1:1000 E~~Use at an assay dependent concentration.
<b>Format</b>	Purified polyclonal antibody supplied in PBS with 0.09% (W/V) sodium azide. This antibody is purified through a protein A column, followed by peptide affinity purification.
<b>Storage</b>	Maintain refrigerated at 2-8°C for up to 2 weeks. For long term storage store at -20°C in small aliquots to prevent freeze-thaw cycles.
<b>Precautions</b>	Mouse Cdkl4 Antibody (C-term) is for research use only and not for use in diagnostic or therapeutic procedures.

## Protein Information

---

<b>Name</b>	Cdkl4
<b>Synonyms</b>	Gm942
<b>Cellular Location</b>	Cytoplasm.

## Background

---

Cdkl4 belongs to the protein kinase superfamily. CMGC Ser/Thr protein kinase family. CDC2/CDKX subfamily.

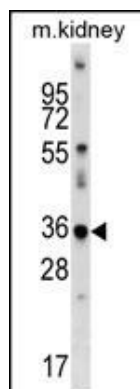
## References

---

Zambrowicz, B.P., et al. Proc. Natl. Acad. Sci. U.S.A. 100(24):14109-14114(2003)

## Images

---



Mouse Cdkl4 Antibody (C-term) (Cat. #AP16075b) western blot analysis in mouse kidney tissue lysates (35ug/lane). This demonstrates the Cdkl4 antibody detected the Cdkl4 protein (arrow).

Please note: All products are 'FOR RESEARCH USE ONLY. NOT FOR USE IN DIAGNOSTIC OR THERAPEUTIC PROCEDURES'.