

# FAM100B Antibody (Center)

Affinity Purified Rabbit Polyclonal Antibody (Pab)

Catalog # AP16155c

## Product Information

---

|                   |                             |
|-------------------|-----------------------------|
| Application       | WB, E                       |
| Primary Accession | <a href="#">Q8IYN6</a>      |
| Other Accession   | <a href="#">NP_872371.1</a> |
| Reactivity        | Human, Rat, Mouse           |
| Host              | Rabbit                      |
| Clonality         | Polyclonal                  |
| Isotype           | Rabbit IgG                  |
| Clone Names       | RB35433                     |
| Calculated MW     | 17877                       |
| Antigen Region    | 69-97                       |

## Additional Information

---

|                    |  |
|--------------------|--|
| Gene ID            | 283991   |
| Other Names        | UBA-like domain-containing protein 2, UBALD2, FAM100B  |
| Target/Specificity | This FAM100B antibody is generated from rabbits immunized with a KLH conjugated synthetic peptide between 69-97 amino acids from the Central region of human FAM100B.                    |
| Dilution           | WB~~1:1000 E~~Use at an assay dependent concentration.   |
| Format             | Purified polyclonal antibody supplied in PBS with 0.05% (V/V) Proclin 300. This antibody is prepared by Saturated Ammonium Sulfate (SAS) precipitation followed by dialysis against PBS. |
| Storage            | Maintain refrigerated at 2-8°C for up to 2 weeks. For long term storage store at -20°C in small aliquots to prevent freeze-thaw cycles.  |
| Precautions        | FAM100B Antibody (Center) is for research use only and not for use in diagnostic or therapeutic procedures.  |

## Protein Information

---

|          |         |
|----------|---------|
| Name     | UBALD2  |
| Synonyms | FAM100B |

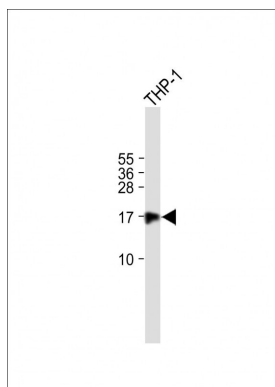
## References

---

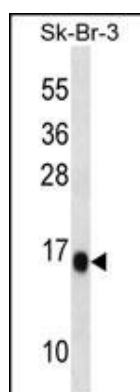
Gerhard, D.S., et al. Genome Res. 14 (10B), 2121-2127 (2004) :

## Images

---



All lanes : Anti-FAM100B Antibody (Center) at 1:1000 dilution Lane 1: THP-1 whole cell lysate Lysates/proteins at 20 µg per lane. Secondary Goat Anti-Rabbit IgG, (H+L), Peroxidase conjugated (ASP1615) at 1/15000 dilution. Observed band size : 17kDa Blocking/Dilution buffer: 5% NFDM/TBST.



FAM100B Antibody (Center) (Cat. #AP16155c) western blot analysis in SK-BR-3 cell line lysates (35ug/lane). This demonstrates the FAM100B antibody detected the FAM100B protein (arrow).

Please note: All products are 'FOR RESEARCH USE ONLY. NOT FOR USE IN DIAGNOSTIC OR THERAPEUTIC PROCEDURES'.