

TTC23 Antibody (Center)

Affinity Purified Rabbit Polyclonal Antibody (Pab)

Catalog # AP16173c

Product Information

Application	WB, E
Primary Accession	Q5W5X9
Other Accession	NP_001035745.1 , NP_001035747.1 , NP_001035748.1
Reactivity	Human
Host	Rabbit
Clonality	Polyclonal
Isotype	Rabbit IgG
Clone Names	RB35504
Calculated MW	50009
Antigen Region	137-165

Additional Information

Gene ID	64927
Other Names	Tetratricopeptide repeat protein 23, TPR repeat protein 23, Cervical cancer proto-oncogene 8 protein, HCC-8, TTC23
Target/Specificity	This TTC23 antibody is generated from rabbits immunized with a KLH conjugated synthetic peptide between 137-165 amino acids from the Central region of human TTC23.
Dilution	WB~~1:1000 E~~Use at an assay dependent concentration.
Format	Purified polyclonal antibody supplied in PBS with 0.09% (W/V) sodium azide. This antibody is purified through a protein A column, followed by peptide affinity purification.
Storage	Maintain refrigerated at 2-8°C for up to 2 weeks. For long term storage store at -20°C in small aliquots to prevent freeze-thaw cycles.
Precautions	TTC23 Antibody (Center) is for research use only and not for use in diagnostic or therapeutic procedures.

Protein Information

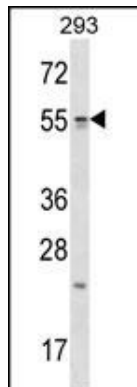
Name	TTC23
Function	Participates positively in the ciliary Hedgehog (Hh) signaling.
Cellular Location	Cell projection, cilium {ECO:0000250 UniProtKB:Q8CHY7}. Note=Colocalizes

with EVC and IQCE at the EvC zone of primary cilia.
{ECO:0000250|UniProtKB:Q8CHY7}

References

Karasik, D., et al. J. Bone Miner. Res. 25(7):1555-1563(2010)
Oh, J.H., et al. Mamm. Genome 16(12):942-954(2005)

Images



TTC23 Antibody (Center) (Cat. #AP16173c) western blot analysis in 293 cell line lysates (35ug/lane). This demonstrates the TTC23 antibody detected the TTC23 protein (arrow).

Please note: All products are 'FOR RESEARCH USE ONLY. NOT FOR USE IN DIAGNOSTIC OR THERAPEUTIC PROCEDURES'.