

AGFG1 Antibody (N-term)

Affinity Purified Rabbit Polyclonal Antibody (Pab)

Catalog # AP16184a

Product Information

Application	WB, E
Primary Accession	P52594
Other Accession	Q4KLH5 , Q8K2K6 , Q2TA45 , NP_004495.2 , NP_001128661.1 , NP_001128660.1
Reactivity	Human
Predicted	Bovine, Mouse, Rat
Host	Rabbit
Clonality	Polyclonal
Isotype	Rabbit IgG
Clone Names	RB35563
Calculated MW	58260
Antigen Region	1-30

Additional Information

Gene ID	3267
Other Names	Arf-GAP domain and FG repeat-containing protein 1, HIV-1 Rev-binding protein, Nucleoporin-like protein RIP, Rev-interacting protein, Rev/Rex activation domain-binding protein, AGFG1, HRB, RAB, RIP
Target/Specificity	This AGFG1 antibody is generated from rabbits immunized with a KLH conjugated synthetic peptide between 1-30 amino acids from the N-terminal region of human AGFG1.
Dilution	WB~~1:1000 E~~Use at an assay dependent concentration.
Format	Purified polyclonal antibody supplied in PBS with 0.09% (W/V) sodium azide. This antibody is purified through a protein A column, followed by peptide affinity purification.
Storage	Maintain refrigerated at 2-8°C for up to 2 weeks. For long term storage store at -20°C in small aliquots to prevent freeze-thaw cycles.
Precautions	AGFG1 Antibody (N-term) is for research use only and not for use in diagnostic or therapeutic procedures.

Protein Information

Name	AGFG1
Synonyms	HRB, RAB, RIP

Function	Required for vesicle docking or fusion during acrosome biogenesis (By similarity). May play a role in RNA trafficking or localization. In case of infection by HIV-1, acts as a cofactor for viral Rev and promotes movement of Rev-responsive element-containing RNAs from the nuclear periphery to the cytoplasm. This step is essential for HIV-1 replication.
Cellular Location	Nucleus. Cytoplasmic vesicle
Tissue Location	Ubiquitously expressed.

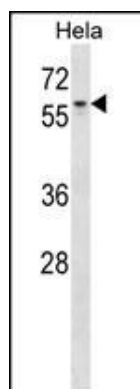
Background

The protein encoded by this gene is related to nucleoporins, a class of proteins that mediate nucleocytoplasmic transport. The encoded protein binds the activation domain of the human immunodeficiency virus Rev protein when Rev is assembled onto its RNA target, and is required for the nuclear export of Rev-directed RNAs. Multiple transcript variants encoding different isoforms have been found for this gene.

References

Bowes, J.D., et al. Pharmacogenet. Genomics 19(4):319-323(2009)
 Chaineau, M., et al. J. Biol. Chem. 283(49):34365-34373(2008)
 Pryor, P.R., et al. Cell 134(5):817-827(2008)
 Sugiyama, N., et al. Mol. Cell Proteomics 6(6):1103-1109(2007)
 Olsen, J.V., et al. Cell 127(3):635-648(2006)

Images



AGFG1 Antibody (N-term) (Cat. #AP16184a) western blot analysis in HeLa cell line lysates (35ug/lane). This demonstrates the AGFG1 antibody detected the AGFG1 protein (arrow).

Please note: All products are 'FOR RESEARCH USE ONLY. NOT FOR USE IN DIAGNOSTIC OR THERAPEUTIC PROCEDURES'.