

RPS20 Antibody (N-term)

Affinity Purified Rabbit Polyclonal Antibody (Pab)

Catalog # AP16187a

Product Information

Application	WB, E
Primary Accession	P60866
Other Accession	P23403 , P60868 , A1XQU9 , P60867 , Q4R5D0 , Q3ZBH8 , NP_001014.1
Reactivity	Human, Rat, Mouse
Predicted	Bovine, Monkey, Mouse, Pig, Rat, Xenopus
Host	Rabbit
Clonality	Polyclonal
Isotype	Rabbit IgG
Clone Names	RB35572
Calculated MW	13373
Antigen Region	26-55

Additional Information

Gene ID	6224
Other Names	40S ribosomal protein S20, RPS20
Target/Specificity	This RPS20 antibody is generated from rabbits immunized with a KLH conjugated synthetic peptide between 26-55 amino acids from the N-terminal region of human RPS20.
Dilution	WB~~1:1000 E~~Use at an assay dependent concentration.
Format	Purified polyclonal antibody supplied in PBS with 0.09% (W/V) sodium azide. This antibody is purified through a protein A column, followed by peptide affinity purification.
Storage	Maintain refrigerated at 2-8°C for up to 2 weeks. For long term storage store at -20°C in small aliquots to prevent freeze-thaw cycles.
Precautions	RPS20 Antibody (N-term) is for research use only and not for use in diagnostic or therapeutic procedures.

Protein Information

Name	RPS20
Function	Component of the small ribosomal subunit (PubMed: 23636399). The ribosome is a large ribonucleoprotein complex responsible for the synthesis of proteins in the cell (PubMed: 23636399).

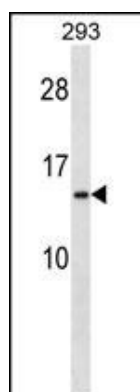
Background

Ribosomes, the organelles that catalyze protein synthesis, consist of a small 40S subunit and a large 60S subunit. Together these subunits are composed of 4 RNA species and approximately 80 structurally distinct proteins. This gene encodes a ribosomal protein that is a component of the 40S subunit. The protein belongs to the S10P family of ribosomal proteins. It is located in the cytoplasm. This gene is co-transcribed with the small nucleolar RNA gene U54, which is located in its second intron. As is typical for genes encoding ribosomal proteins, there are multiple processed pseudogenes of this gene dispersed through the genome. Two transcript variants encoding different isoforms have been identified for this gene.

References

Zhao, J., et al. BMC Med. Genet. 11, 96 (2010) :
Sugiyama, N., et al. Mol. Cell Proteomics 6(6):1103-1109(2007)
Frum, R., et al. J. Proteome Res. 6(4):1410-1417(2007)
Wang, A.G., et al. Biochem. Biophys. Res. Commun. 345(3):1022-1032(2006)
De Bortoli, M., et al. BMC Cancer 6, 223 (2006) :

Images



RPS20 Antibody (N-term) (Cat. #AP16187a) western blot analysis in 293 cell line lysates (35ug/lane). This demonstrates the RPS20 antibody detected the RPS20 protein (arrow).

Please note: All products are 'FOR RESEARCH USE ONLY. NOT FOR USE IN DIAGNOSTIC OR THERAPEUTIC PROCEDURES'.