

WDR40A Antibody (Center)

Affinity Purified Rabbit Polyclonal Antibody (Pab)

Catalog # AP16196c

Product Information

Application	WB, E
Primary Accession	Q5T6F0
Other Accession	Q8BGZ3 , Q4R3J7 , Q3MHH0 , NP_056212.1
Reactivity	Human
Predicted	Bovine, Monkey, Mouse
Host	Rabbit
Clonality	Polyclonal
Isotype	Rabbit IgG
Clone Names	RB35605
Calculated MW	50517
Antigen Region	223-252

Additional Information

Gene ID	25853
Other Names	DDB1- and CUL4-associated factor 12, Centrosome-related protein TCC52, Testis cancer centrosome-related protein, WD repeat-containing protein 40A, DCAF12, KIAA1892, TCC52, WDR40A
Target/Specificity	This WDR40A antibody is generated from rabbits immunized with a KLH conjugated synthetic peptide between 223-252 amino acids from the Central region of human WDR40A.
Dilution	WB~~1:1000 E~~Use at an assay dependent concentration.
Format	Purified polyclonal antibody supplied in PBS with 0.09% (W/V) sodium azide. This antibody is purified through a protein A column, followed by peptide affinity purification.
Storage	Maintain refrigerated at 2-8°C for up to 2 weeks. For long term storage store at -20°C in small aliquots to prevent freeze-thaw cycles.
Precautions	WDR40A Antibody (Center) is for research use only and not for use in diagnostic or therapeutic procedures.

Protein Information

Name	DCAF12 {ECO:0000303 PubMed:16949367, ECO:0000312 HGNC:HGNC:19911}
------	--

Function	Substrate-recognition component of a DCX (DDB1-CUL4-X-box) E3 ubiquitin-protein ligase complex of the DesCEND (destruction via C-end degrons) pathway, which recognizes a C-degron located at the extreme C terminus of target proteins, leading to their ubiquitination and degradation (PubMed: 16949367 , PubMed: 16964240 , PubMed: 29779948). The C- degron recognized by the DesCEND pathway is usually a motif of less than ten residues and can be present in full-length proteins, truncated proteins or proteolytically cleaved forms (PubMed: 29779948). The DCX(DCAF12) complex specifically recognizes proteins with a diglutamate (Glu-Glu) at the C-terminus, such as MAGEA3, MAGEA6 and CCT5, leading to their ubiquitination and degradation (PubMed: 29779948 , PubMed: 31267705). Ubiquitination of MAGEA3, MAGEA6 by DCX(DCAF12) complex is required for starvation-induced autophagy (PubMed: 31267705). Also directly recognizes the C-terminal glutamate-leucine (Glu-Leu) degron as an alternative degron in proteins such as MOV10, leading to their ubiquitination and degradation. Controls the protein level of MOV10 during spermatogenesis and in T cells, especially after their activation (PubMed: 34065512).
Cellular Location	Cytoplasm. Cytoplasm, cytoskeleton, microtubule organizing center, centrosome. Nucleus
Tissue Location	Highly expressed in lung cancer tissues and some cancer cell lines (PubMed:18957058). Restricted expression in normal testis (PubMed:18957058).

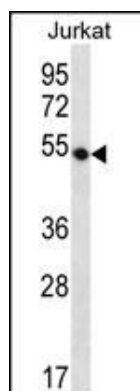
Background

This gene encodes a WD repeat-containing protein that interacts with the COP9 signalosome, a macromolecular complex that interacts with cullin-RING E3 ligases and regulates their activity by hydrolyzing cullin-Nedd8 conjugates.

References

Olma, M.H., et al. J. Cell. Sci. 122 (PT 7), 1035-1044 (2009) :
Soranzo, N., et al. PLoS Genet. 5 (4), E1000445 (2009) :
Li, S., et al. Cancer Sci. 99(11):2274-2279(2008)
Bernstein, D., et al. J. Heart Lung Transplant. 26(12):1270-1280(2007)
Olsen, J.V., et al. Cell 127(3):635-648(2006)

Images



WDR40A Antibody (Center) (Cat. #AP16196c) western blot analysis in Jurkat cell line lysates (35ug/lane). This demonstrates the WDR40A antibody detected the WDR40A protein (arrow).