

RP13-102H20.1/ARHGAP36 Antibody (C-term)

Affinity Purified Rabbit Polyclonal Antibody (Pab)

Catalog # AP16204b

Product Information

Application	WB, E
Primary Accession	Q6ZRI8
Other Accession	NP_659404.2
Reactivity	Human
Host	Rabbit
Clonality	Polyclonal
Isotype	Rabbit IgG
Clone Names	RB35643
Calculated MW	61664
Antigen Region	13-102

Additional Information

Gene ID	158763
Other Names	Rho GTPase-activating protein 36, ARHGAP36
Target/Specificity	This RP13-102H20.1/ARHGAP36 antibody is generated from rabbits immunized with a KLH conjugated synthetic peptide between 373-402 amino acids from the C-terminal region of human RP13-102H20.1/ARHGAP36.
Dilution	WB~~1:1000 E~~Use at an assay dependent concentration.
Format	Purified polyclonal antibody supplied in PBS with 0.09% (W/V) sodium azide. This antibody is purified through a protein A column, followed by peptide affinity purification.
Storage	Maintain refrigerated at 2-8°C for up to 2 weeks. For long term storage store at -20°C in small aliquots to prevent freeze-thaw cycles.
Precautions	RP13-102H20.1/ARHGAP36 Antibody (C-term) is for research use only and not for use in diagnostic or therapeutic procedures.

Protein Information

Name	ARHGAP36
Function	GTPase activator for the Rho-type GTPases by converting them to an inactive GDP-bound state.
Tissue Location	Detected in the outer root sheath of hair follicles at the level of the stem cell

bulge, during the anagen and telogen phases of hair growth (at protein level)

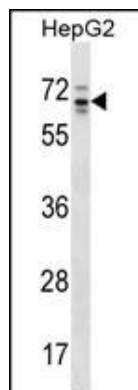
Background

GTPase activator for the Rho-type GTPases by converting them to an inactive GDP-bound state (By similarity).

References

Ross, M.T., et al. Nature 434(7031):325-337(2005)

Images



RP13-102H20.1/ARHGAP36 Antibody (C-term) (Cat. #AP16204b) western blot analysis in HepG2 cell line lysates (35ug/lane). This demonstrates the RP13-102H20.1 antibody detected the RP13-102H20.1 protein (arrow).

Please note: All products are 'FOR RESEARCH USE ONLY. NOT FOR USE IN DIAGNOSTIC OR THERAPEUTIC PROCEDURES'.