

# DNAH2 Antibody (N-term)

Affinity Purified Rabbit Polyclonal Antibody (Pab)

Catalog # AP16211a

## Product Information

---

<b>Application</b>	WB, E
<b>Primary Accession</b>	<a href="#">Q9P225</a>
<b>Other Accession</b>	<a href="#">NP_065928.2</a>
<b>Reactivity</b>	Human, Mouse
<b>Host</b>	Rabbit
<b>Clonality</b>	Polyclonal
<b>Isotype</b>	Rabbit IgG
<b>Clone Names</b>	RB35662
<b>Calculated MW</b>	507698
<b>Antigen Region</b>	440-468

## Additional Information

---

<b>Gene ID</b>	146754
<b>Other Names</b>	Dynein heavy chain 2, axonemal, Axonemal beta dynein heavy chain 2, Ciliary dynein heavy chain 2, Dynein heavy chain domain-containing protein 3, DNAH2, DNAHC2, DNHD3, KIAA1503
<b>Target/Specificity</b>	This DNAH2 antibody is generated from rabbits immunized with a KLH conjugated synthetic peptide between 440-468 amino acids from the N-terminal region of human DNAH2.
<b>Dilution</b>	WB~~1:1000 E~~Use at an assay dependent concentration.
<b>Format</b>	Purified polyclonal antibody supplied in PBS with 0.09% (W/V) sodium azide. This antibody is purified through a protein A column, followed by peptide affinity purification.
<b>Storage</b>	Maintain refrigerated at 2-8°C for up to 2 weeks. For long term storage store at -20°C in small aliquots to prevent freeze-thaw cycles.
<b>Precautions</b>	DNAH2 Antibody (N-term) is for research use only and not for use in diagnostic or therapeutic procedures.

## Protein Information

---

<b>Name</b>	DNAH2 ( <a href="#">HGNC:2948</a> )
<b>Synonyms</b>	DNAHC2, DNHD3, KIAA1503

<b>Function</b>	As part of the axonemal inner dynein arm complex plays a central role in ciliary beat (PubMed: <a href="#">30811583</a> ). Expressed in sperm flagellum, it is required for sperm motility (PubMed: <a href="#">30811583</a> ). Dyneins are microtubule-based molecular motors possessing ATPase activities that can convert the chemical energy of ATP into relative sliding between adjacent microtubule doublets to generate ciliary bending (PubMed: <a href="#">30811583</a> ).
<b>Cellular Location</b>	Cytoplasm, cytoskeleton, cilium axoneme {ECO:0000250 UniProtKB:P0C6F1}. Cytoplasm, cytoskeleton, flagellum axoneme
<b>Tissue Location</b>	Expressed primarily in trachea and testis, 2 tissues containing axonemal structures. Also expressed in lung Expressed in spermatozoa (at protein level) (PubMed:31178125)

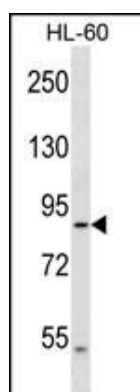
## Background

Dyneins are microtubule-associated motor protein complexes composed of several heavy, light, and intermediate chains. The axonemal dyneins, found in cilia and flagella, are components of the outer and inner dynein arms attached to the peripheral microtubule doublets. DNAH2 is an axonemal inner arm dynein heavy chain (Chapelin et al., 1997 [PubMed 9256245]).

## References

Barrett, J.C., et al. Nat. Genet. (2009) In press :  
Wistow, G., et al. Mol. Vis. 8, 196-204 (2002) :  
Chapelin, C., et al. FEBS Lett. 412(2):325-330(1997)

## Images



DNAH2 Antibody (N-term) (Cat. #AP16211a) western blot analysis in HL-60 cell line lysates (35ug/lane). This demonstrates the DNAH2 antibody detected the DNAH2 protein (arrow).

Please note: All products are 'FOR RESEARCH USE ONLY. NOT FOR USE IN DIAGNOSTIC OR THERAPEUTIC PROCEDURES'.