

MAGEB10 Antibody (Center)

Affinity Purified Rabbit Polyclonal Antibody (Pab)

Catalog # AP16215c

Product Information

Application	WB, E
Primary Accession	Q96LZ2
Other Accession	NP_872312.2
Reactivity	Human
Host	Rabbit
Clonality	Polyclonal
Isotype	Rabbit IgG
Clone Names	RB35674
Calculated MW	38971
Antigen Region	88-116

Additional Information

Gene ID	139422
Other Names	Melanoma-associated antigen B10, MAGE-B10 antigen, MAGEB10
Target/Specificity	This MAGEB10 antibody is generated from rabbits immunized with a KLH conjugated synthetic peptide between 88-116 amino acids from the Central region of human MAGEB10.
Dilution	WB~~1:1000 E~~Use at an assay dependent concentration.
Format	Purified polyclonal antibody supplied in PBS with 0.09% (W/V) sodium azide. This antibody is purified through a protein A column, followed by peptide affinity purification.
Storage	Maintain refrigerated at 2-8°C for up to 2 weeks. For long term storage store at -20°C in small aliquots to prevent freeze-thaw cycles.
Precautions	MAGEB10 Antibody (Center) is for research use only and not for use in diagnostic or therapeutic procedures.

Protein Information

Name	MAGEB10
------	---------

Background

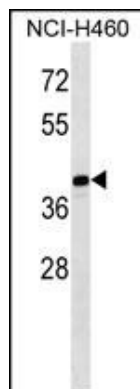
This gene encodes a member of the B subfamily of the melanoma associated antigen protein family. The

encoded protein is specifically expressed in testis and tumor cells. [provided by RefSeq].

References

Chomez, P., et al. Cancer Res. 61(14):5544-5551(2001)

Images



MAGEB10 Antibody (Center) (Cat. #AP16215c) western blot analysis in NCI-H460 cell line lysates (35ug/lane). This demonstrates the MAGEB10 antibody detected the MAGEB10 protein (arrow).

Please note: All products are 'FOR RESEARCH USE ONLY. NOT FOR USE IN DIAGNOSTIC OR THERAPEUTIC PROCEDURES'.