

# RUNDC1 Antibody (C-term)

Affinity Purified Rabbit Polyclonal Antibody (Pab)

Catalog # AP16243b

## Product Information

---

Application	WB, E
Primary Accession	<a href="#">Q96C34</a>
Other Accession	<a href="#">Q0VDN7</a> , <a href="#">NP_775102.2</a>
Reactivity	Mouse
Host	Rabbit
Clonality	Polyclonal
Isotype	Rabbit IgG
Clone Names	RB34893
Calculated MW	67643
Antigen Region	509-537

## Additional Information

---

Gene ID	146923
Other Names	RUN domain-containing protein 1, RUNDC1
Target/Specificity	This RUNDC1 antibody is generated from rabbits immunized with a KLH conjugated synthetic peptide between 509-537 amino acids from the C-terminal region of human RUNDC1.
Dilution	WB~~1:1000 E~~Use at an assay dependent concentration.
Format	Purified polyclonal antibody supplied in PBS with 0.09% (W/V) sodium azide. This antibody is purified through a protein A column, followed by peptide affinity purification.
Storage	Maintain refrigerated at 2-8°C for up to 2 weeks. For long term storage store at -20°C in small aliquots to prevent freeze-thaw cycles.
Precautions	RUNDC1 Antibody (C-term) is for research use only and not for use in diagnostic or therapeutic procedures.

## Protein Information

---

Name	RUNDC1
Function	May play a role as p53/TP53 inhibitor and thus may have oncogenic activity.

## Background

---

RUNDC1 may play a role as p53/TP53 inhibitor and thus may have oncogenic activity.

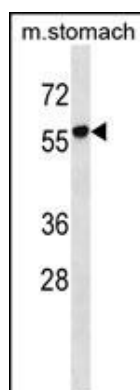
## References

---

Ota, T., et al. Nat. Genet. 36(1):40-45(2004)

## Images

---



RUNDC1 Antibody (C-term) (Cat. #AP16243b) western blot analysis in mouse stomach tissue lysates (35ug/lane). This demonstrates the RUNDC1 antibody detected the RUNDC1 protein (arrow).

Please note: All products are 'FOR RESEARCH USE ONLY. NOT FOR USE IN DIAGNOSTIC OR THERAPEUTIC PROCEDURES'.