

DCT Antibody (Center)

Affinity Purified Rabbit Polyclonal Antibody (Pab)

Catalog # AP16267C

Product Information

Application	WB, E
Primary Accession	P40126
Other Accession	NP_001913.2
Reactivity	Mouse, Human
Host	Rabbit
Clonality	Polyclonal
Isotype	Rabbit IgG
Clone Names	RB35555
Calculated MW	59145
Antigen Region	286-314

Additional Information

Gene ID	1638
Other Names	L-dopachrome tautomerase, DCT, DT, L-dopachrome Delta-isomerase, Tyrosinase-related protein 2, TRP-2, TRP2, DCT, TYRP2
Target/Specificity	This DCT antibody is generated from rabbits immunized with a KLH conjugated synthetic peptide between 286-314 amino acids from the Central region of human DCT.
Dilution	WB~~1:1000 E~~Use at an assay dependent concentration.
Format	Purified polyclonal antibody supplied in PBS with 0.09% (W/V) sodium azide. This antibody is purified through a protein A column, followed by peptide affinity purification.
Storage	Maintain refrigerated at 2-8°C for up to 2 weeks. For long term storage store at -20°C in small aliquots to prevent freeze-thaw cycles.
Precautions	DCT Antibody (Center) is for research use only and not for use in diagnostic or therapeutic procedures.

Protein Information

Name	DCT (HGNC:2709)
Synonyms	TYRP2
Function	Plays a role in melanin biosynthesis (PubMed: 33100333). Catalyzes the

conversion of L-dopachrome into 5,6-dihydroxyindole-2- carboxylic acid (DHICA).

Cellular Location

Melanosome membrane; Single-pass type I membrane protein. Melanosome {ECO:0000250|UniProtKB:P29812}. Note=Proper trafficking to melanosome is regulated by SGSM2, ANKRD27, RAB9A, RAB32 and RAB38 {ECO:0000250|UniProtKB:P29812}

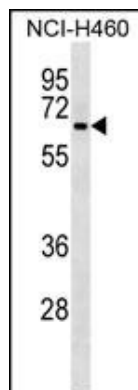
Background

DCT is involved in regulating eumelanin and phaeomelanin levels.

References

Sendoel, A., et al. Nature 465(7298):577-583(2010)
Khong, H.T., et al. J. Immunol. 168(2):951-956(2002)
Sugimoto, H., et al. Biochemistry 38(11):3268-3279(1999)
Nishihira, J., et al. Biochem. Biophys. Res. Commun. 243(2):538-544(1998)
Sugimoto, H., et al. J. Struct. Biol. 120(1):105-108(1997)

Images



DCT Antibody (Center) (Cat. #AP16267c) western blot analysis in NCI-H460 cell line lysates (35ug/lane). This demonstrates the DCT antibody detected the DCT protein (arrow).

Citations

- [Silencing of PMEL attenuates melanization via activating lysosomes and degradation of tyrosinase by lysosomes.](#)

Please note: All products are 'FOR RESEARCH USE ONLY. NOT FOR USE IN DIAGNOSTIC OR THERAPEUTIC PROCEDURES'.