

# C6orf211 Antibody (N-term)

Affinity Purified Rabbit Polyclonal Antibody (Pab)

Catalog # AP16287a

## Product Information

---

Application	WB, E
Primary Accession	<a href="#">Q9H993</a>
Other Accession	<a href="#">Q6AYT5</a> , <a href="#">NP_078849.1</a>
Reactivity	Human
Predicted	Rat
Host	Rabbit
Clonality	Polyclonal
Isotype	Rabbit IgG
Clone Names	RB35607
Calculated MW	51172
Antigen Region	29-57

## Additional Information

---

Gene ID	79624
Other Names	UPF0364 protein C6orf211, C6orf211
Target/Specificity	This C6orf211 antibody is generated from rabbits immunized with a KLH conjugated synthetic peptide between 29-57 amino acids from the N-terminal region of human C6orf211.
Dilution	WB~~1:1000 E~~Use at an assay dependent concentration.
Format	Purified polyclonal antibody supplied in PBS with 0.09% (W/V) sodium azide. This antibody is purified through a protein A column, followed by peptide affinity purification.
Storage	Maintain refrigerated at 2-8°C for up to 2 weeks. For long term storage store at -20°C in small aliquots to prevent freeze-thaw cycles.
Precautions	C6orf211 Antibody (N-term) is for research use only and not for use in diagnostic or therapeutic procedures.

## Protein Information

---

Name	ARMT1 {ECO:0000303 PubMed:25732820, ECO:0000312 HGNC:HGNC:17872}
Function	Metal-dependent phosphatase that shows phosphatase activity against several substrates, including fructose-1-phosphate and fructose-6-phosphate

(By similarity). Its preference for fructose-1- phosphate, a strong glycation agent that causes DNA damage rather than a canonical yeast metabolite, suggests a damage-control function in hexose phosphate metabolism (By similarity). Has also been shown to have O-methyltransferase activity that methylates glutamate residues of target proteins to form gamma-glutamyl methyl ester residues (PubMed:[25732820](#)). Possibly methylates PCNA, suggesting it is involved in the DNA damage response (PubMed:[25732820](#)).

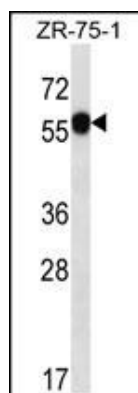
## References

---

Vieira, A.R., et al. Genet. Med. 10(9):668-674(2008)  
Ewing, R.M., et al. Mol. Syst. Biol. 3, 89 (2007) :  
Mungall, A.J., et al. Nature 425(6960):805-811(2003)

## Images

---



C6orf211 Antibody (N-term) (Cat. #AP16287a) western blot analysis in ZR-75-1 cell line lysates (35ug/lane). This demonstrates the C6orf211 antibody detected the C6orf211 protein (arrow).

Please note: All products are 'FOR RESEARCH USE ONLY. NOT FOR USE IN DIAGNOSTIC OR THERAPEUTIC PROCEDURES'.