

TUBB4Q Antibody (N-term)

Affinity Purified Rabbit Polyclonal Antibody (Pab)

Catalog # AP16294a

Product Information

Application	WB, E
Primary Accession	Q99867
Other Accession	NP_064424.3
Reactivity	Human
Host	Rabbit
Clonality	Polyclonal
Isotype	Rabbit IgG
Clone Names	RB35676
Antigen Region	64-93

Additional Information

Target/Specificity	This TUBB4Q antibody is generated from rabbits immunized with a KLH conjugated synthetic peptide between 64-93 amino acids from the N-terminal region of human TUBB4Q.
Dilution	WB~~1:1000 E~~Use at an assay dependent concentration.
Format	Purified polyclonal antibody supplied in PBS with 0.09% (W/V) sodium azide. This antibody is purified through a protein A column, followed by peptide affinity purification.
Storage	Maintain refrigerated at 2-8°C for up to 2 weeks. For long term storage store at -20°C in small aliquots to prevent freeze-thaw cycles.
Precautions	TUBB4Q Antibody (N-term) is for research use only and not for use in diagnostic or therapeutic procedures.

Protein Information

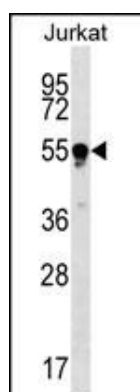
Background

Tubulin is the major constituent of microtubules. It binds two moles of GTP, one at an exchangeable site on the beta chain and one at a non-exchangeable site on the alpha-chain (By similarity).

References

van Geel, M., et al. Am. J. Hum. Genet. 70(1):269-278(2002)
van Geel, M., et al. Cytogenet. Cell Genet. 88 (3-4), 316-321 (2000) :

Images



TUBB4Q Antibody (N-term) (Cat. #AP16294a) western blot analysis in Jurkat cell line lysates (35ug/lane). This demonstrates the TUBB4Q antibody detected the TUBB4Q protein (arrow).

Please note: All products are 'FOR RESEARCH USE ONLY. NOT FOR USE IN DIAGNOSTIC OR THERAPEUTIC PROCEDURES'.