

# CHCHD10 Antibody (N-term)

Affinity Purified Rabbit Polyclonal Antibody (Pab)

Catalog # AP16303a

## Product Information

---

<b>Application</b>	WB, E
<b>Primary Accession</b>	<a href="#">Q8WYQ3</a>
<b>Other Accession</b>	<a href="#">NP_998885.1</a>
<b>Reactivity</b>	Human
<b>Host</b>	Rabbit
<b>Clonality</b>	Polyclonal
<b>Isotype</b>	Rabbit IgG
<b>Clone Names</b>	RB35702
<b>Calculated MW</b>	14149
<b>Antigen Region</b>	1-30

## Additional Information

---

<b>Gene ID</b>	400916
<b>Other Names</b>	Coiled-coil-helix-coiled-coil-helix domain-containing protein 10, mitochondrial, Protein N27C7-4, CHCHD10, C22orf16
<b>Target/Specificity</b>	This CHCHD10 antibody is generated from rabbits immunized with a KLH conjugated synthetic peptide between 1-30 amino acids from the N-terminal region of human CHCHD10.
<b>Dilution</b>	WB~~1:1000 E~~Use at an assay dependent concentration.
<b>Format</b>	Purified polyclonal antibody supplied in PBS with 0.09% (W/V) sodium azide. This antibody is purified through a protein A column, followed by peptide affinity purification.
<b>Storage</b>	Maintain refrigerated at 2-8°C for up to 2 weeks. For long term storage store at -20°C in small aliquots to prevent freeze-thaw cycles.
<b>Precautions</b>	CHCHD10 Antibody (N-term) is for research use only and not for use in diagnostic or therapeutic procedures.

## Protein Information

---

<b>Name</b>	CHCHD10
<b>Synonyms</b>	C22orf16
<b>Function</b>	May be involved in the maintenance of mitochondrial organization and

mitochondrial cristae structure.

**Cellular Location**

Mitochondrion intermembrane space. Note=Enriched at the cristae junctions

**Tissue Location**

Ubiquitously expressed. Higher expression is observed in heart and liver.

## References

---

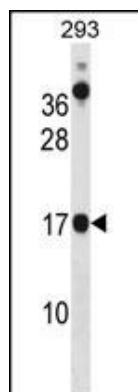
Martherus, R.S., et al. Biochem. Biophys. Res. Commun. (2010) In press :

Bailey, S.D., et al. Diabetes Care 33(10):2250-2253(2010)

Talmud, P.J., et al. Am. J. Hum. Genet. 85(5):628-642(2009)

## Images

---



CHCHD10 Antibody (N-term) (Cat. #AP16303a) western blot analysis in 293 cell line lysates (35ug/lane). This demonstrates the CHCHD10 antibody detected the CHCHD10 protein (arrow).

Please note: All products are 'FOR RESEARCH USE ONLY. NOT FOR USE IN DIAGNOSTIC OR THERAPEUTIC PROCEDURES'.