

BOLL Antibody (N-term)

Affinity Purified Rabbit Polyclonal Antibody (Pab)

Catalog # AP16329a

Product Information

Application	WB, E
Primary Accession	Q8N9W6
Other Accession	Q8WP23 , NP_149019.1 , NP_932074.1
Reactivity	Human
Predicted	Monkey
Host	Rabbit
Clonality	Polyclonal
Isotype	Rabbit IgG
Clone Names	RB35791
Calculated MW	31301
Antigen Region	23-51

Additional Information

Gene ID	66037
Other Names	Protein boule-like, BOLL, BOULE
Target/Specificity	This BOLL antibody is generated from rabbits immunized with a KLH conjugated synthetic peptide between 23-51 amino acids from the N-terminal region of human BOLL.
Dilution	WB~~1:1000 E~~Use at an assay dependent concentration.
Format	Purified polyclonal antibody supplied in PBS with 0.09% (W/V) sodium azide. This antibody is purified through a protein A column, followed by peptide affinity purification.
Storage	Maintain refrigerated at 2-8°C for up to 2 weeks. For long term storage store at -20°C in small aliquots to prevent freeze-thaw cycles.
Precautions	BOLL Antibody (N-term) is for research use only and not for use in diagnostic or therapeutic procedures.

Protein Information

Name	BOLL
Synonyms	BOULE
Function	Probable RNA-binding protein, which may be required during

spermatogenesis. May act by binding to the 3'-UTR of mRNAs and regulating their translation (By similarity).

Cellular Location

Cytoplasm

Tissue Location

Testis specific. Not expressed in early embryos, primordial germ cells and spermatogonial cells. First expressed in the cytoplasm of spermatocytes and then persists through meiosis

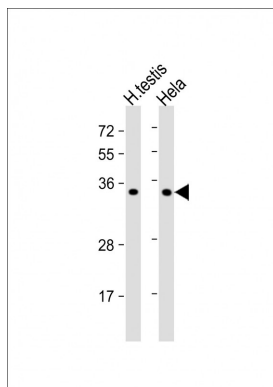
Background

BOLL belongs to the DAZ gene family required for germ cell development. It encodes an RNA-binding protein which is more similar to Drosophila Boule than to human proteins encoded by genes DAZ (deleted in azoospermia) or DAZL (deleted in azoospermia-like). Loss of this gene function results in the absence of sperm in semen (azoospermia). Histological studies demonstrated that the primary defect is at the meiotic G2/M transition.

References

Chen, P., et al. J. Androl. 31(2):163-168(2010)
Kee, K., et al. Nature 462(7270):222-225(2009)
Lin, Y.M., et al. J. Clin. Endocrinol. Metab. 94(7):2650-2657(2009)
Bilguvar, K., et al. Nat. Genet. 40(12):1472-1477(2008)
Lamesch, P., et al. Genomics 89(3):307-315(2007)

Images



All lanes : Anti-BOLL Antibody (N-term) at 1:1000 dilution
Lane 1: human testis lysate Lane 2: HeLa whole cell lysate
Lysates/proteins at 20 µg per lane. Secondary Goat Anti-Rabbit IgG, (H+L), Peroxidase conjugated at 1/10000 dilution. Predicted band size : 31 kDa Blocking/Dilution buffer: 5% NFDM/TBST.

Please note: All products are 'FOR RESEARCH USE ONLY. NOT FOR USE IN DIAGNOSTIC OR THERAPEUTIC PROCEDURES'.