

RALY Antibody (Center)

Affinity Purified Rabbit Polyclonal Antibody (Pab)

Catalog # AP16333c

Product Information

Application	WB, E
Primary Accession	Q9UKM9
Other Accession	NP_057951.1 , NP_031393.2
Reactivity	Human
Host	Rabbit
Clonality	Polyclonal
Isotype	Rabbit IgG
Clone Names	RB35842
Calculated MW	32463
Antigen Region	75-103

Additional Information

Gene ID	22913
Other Names	RNA-binding protein Raly, Autoantigen p542, Heterogeneous nuclear ribonucleoprotein C-like 2, hnRNP core protein C-like 2, hnRNP associated with lethal yellow protein homolog, RALY, HNRPCL2, P542
Target/Specificity	This RALY antibody is generated from rabbits immunized with a KLH conjugated synthetic peptide between 75-103 amino acids from the Central region of human RALY.
Dilution	WB~~1:1000 E~~Use at an assay dependent concentration.
Format	Purified polyclonal antibody supplied in PBS with 0.09% (W/V) sodium azide. This antibody is purified through a protein A column, followed by peptide affinity purification.
Storage	Maintain refrigerated at 2-8°C for up to 2 weeks. For long term storage store at -20°C in small aliquots to prevent freeze-thaw cycles.
Precautions	RALY Antibody (Center) is for research use only and not for use in diagnostic or therapeutic procedures.

Protein Information

Name	RALY
Synonyms	HNRPCL2, P542

Function	RNA-binding protein that acts as a transcriptional cofactor for cholesterol biosynthetic genes in the liver. Binds the lipid- responsive non-coding RNA LeXis and is required for LeXis-mediated effect on cholesterologenesis (By similarity). May be a heterogeneous nuclear ribonucleoprotein (hnRNP) (PubMed: 9376072).
Cellular Location	Nucleus {ECO:0000250 UniProtKB:Q64012}.
Tissue Location	Expressed in heart, brain, lung, liver, skeletal muscle, kidney and pancreas. Weakly expressed in placenta

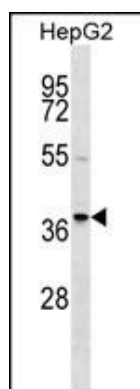
Background

In infectious mononucleosis, anti-EBNA-1 antibodies are produced which cross-react with multiple normal human proteins. The cross-reactivity is due to anti-gly/ala antibodies that cross-react with host proteins containing configurations like those in the EBNA-1 repeat. One such antigen is RALY which is a member of the heterogeneous nuclear ribonucleoprotein gene family. [provided by RefSeq].

References

Rose, J.E., et al. Mol. Med. 16 (7-8), 247-253 (2010) :
 Sugiyama, N., et al. Mol. Cell Proteomics 6(6):1103-1109(2007)
 Matsuoka, S., et al. Science 316(5828):1160-1166(2007)
 Olsen, J.V., et al. Cell 127(3):635-648(2006)
 Olsen, J.V., et al. Cell 127(3):635-648(2006)

Images



RALY Antibody (Center) (Cat. #AP16333c) western blot analysis in HepG2 cell line lysates (35ug/lane). This demonstrates the RALY antibody detected the RALY protein (arrow).

Please note: All products are 'FOR RESEARCH USE ONLY. NOT FOR USE IN DIAGNOSTIC OR THERAPEUTIC PROCEDURES'.