

Erythropoietin Antibody (N-term)

Affinity Purified Rabbit Polyclonal Antibody (Pab)

Catalog # AP16337a

Product Information

Application	WB, E
Primary Accession	P01588
Other Accession	P07865 , NP_000790.2
Reactivity	Human, Rat, Mouse
Predicted	Monkey
Host	Rabbit
Clonality	Polyclonal
Isotype	Rabbit IgG
Clone Names	RB17835
Calculated MW	21307
Antigen Region	28-48

Additional Information

Gene ID	2056
Other Names	Erythropoietin, Epoetin, EPO
Target/Specificity	This Erythropoietin antibody is generated from rabbits immunized with a KLH conjugated synthetic peptide between 28-48 amino acids of human Erythropoietin.
Dilution	WB~~1:1000 E~~Use at an assay dependent concentration.
Format	Purified polyclonal antibody supplied in PBS with 0.09% (W/V) sodium azide. This antibody is purified through a protein A column, followed by peptide affinity purification.
Storage	Maintain refrigerated at 2-8°C for up to 2 weeks. For long term storage store at -20°C in small aliquots to prevent freeze-thaw cycles.
Precautions	Erythropoietin Antibody (N-term) is for research use only and not for use in diagnostic or therapeutic procedures.

Protein Information

Name	EPO
Function	Hormone involved in the regulation of erythrocyte proliferation and differentiation and the maintenance of a physiological level of circulating erythrocyte mass (PubMed: 28283061). Binds to EPOR leading to EPOR

dimerization and JAK2 activation thereby activating specific downstream effectors, including STAT1 and STAT3 (PubMed:[9774108](#)).

Cellular Location

Secreted.

Tissue Location

Produced by kidney or liver of adult mammals and by liver of fetal or neonatal mammals.

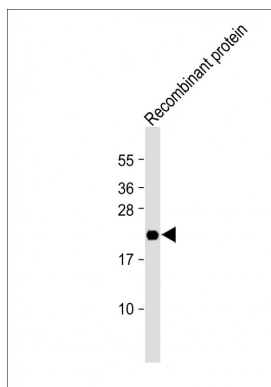
Background

EPO is a member of the EPO/TPO family and encodes a secreted, glycosylated cytokine composed of four alpha helical bundles. The protein is found in the plasma and regulates red cell production by promoting erythroid differentiation and initiating hemoglobin synthesis. This protein also has neuroprotective activity against a variety of potential brain injuries and antiapoptotic functions in several tissue types. [provided by RefSeq].

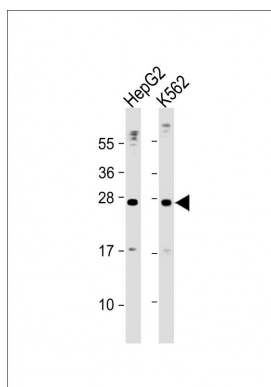
References

Bailey, S.D., et al. Diabetes Care 33(10):2250-2253(2010)
Kristensen, P.L., et al. Eur. J. Endocrinol. 163(3):391-398(2010)
Kim, M.H., et al. Mol. Biol. (Mosk.) 44(4):656-663(2010)
Carraway, M.S., et al. Circ. Res. 106(11):1722-1730(2010)
Shi, Z., et al. Mol. Cancer Res. 8(4):615-626(2010)

Images



Anti-Erythropoietin Antibody (N-term) at 1:2000 dilution + Recombinant human EPO protein Lysates/proteins at 20 µg per lane. Secondary Goat Anti-Rabbit IgG, (H+L), Peroxidase conjugated at 1/10000 dilution. Predicted band size : 21 kDa Blocking/Dilution buffer: 5% NFDM/TBST.



All lanes : Anti-Erythropoietin Antibody (N-term) at 1:2000 dilution Lane 1: HepG2 whole cell lysate Lane 2: K562 whole cell lysate Lysates/proteins at 20 µg per lane. Secondary Goat Anti-Rabbit IgG, (H+L), Peroxidase conjugated at 1/10000 dilution. Predicted band size : 21 kDa Blocking/Dilution buffer: 5% NFDM/TBST.

Please note: All products are 'FOR RESEARCH USE ONLY. NOT FOR USE IN DIAGNOSTIC OR THERAPEUTIC PROCEDURES'.