

# HSDL2 Antibody (Center)

Affinity Purified Rabbit Polyclonal Antibody (Pab)

Catalog # AP16340c

## Product Information

---

Application	WB, E
Primary Accession	<a href="#">Q6YN16</a>
Other Accession	<a href="#">NP_115679.2</a>
Reactivity	Human
Host	Rabbit
Clonality	Polyclonal
Isotype	Rabbit IgG
Clone Names	RB25394
Calculated MW	45395
Antigen Region	229-258

## Additional Information

---

Gene ID	84263
Other Names	Hydroxysteroid dehydrogenase-like protein 2, 1---, HSDL2, C9orf99
Target/Specificity	This HSDL2 antibody is generated from rabbits immunized with a KLH conjugated synthetic peptide between 229-258 amino acids from the Central region of human HSDL2.
Dilution	WB~~1:1000 E~~Use at an assay dependent concentration.
Format	Purified polyclonal antibody supplied in PBS with 0.09% (W/V) sodium azide. This antibody is purified through a protein A column, followed by peptide affinity purification.
Storage	Maintain refrigerated at 2-8°C for up to 2 weeks. For long term storage store at -20°C in small aliquots to prevent freeze-thaw cycles.
Precautions	HSDL2 Antibody (Center) is for research use only and not for use in diagnostic or therapeutic procedures.

## Protein Information

---

Name	HSDL2 ( <a href="#">HGNC:18572</a> )
Synonyms	C9orf99, SDR13C1
Function	Has apparently no steroid dehydrogenase activity (PubMed: <a href="#">19703561</a> ). Controls bile acid (BA) and lipid metabolism in response to nutritional cues

(PubMed:[38820148](#)).

<b>Cellular Location</b>	Peroxisome. Mitochondrion
<b>Tissue Location</b>	Ubiquitous..

## Background

---

HSDL2 has apparently no steroid dehydrogenase activity.

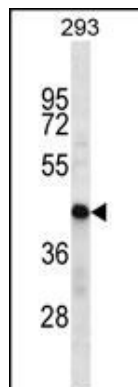
## References

---

Letra, A., et al. Am. J. Med. Genet. A 152A (7), 1701-1710 (2010) :  
Kowalik, D., et al. J. Steroid Biochem. Mol. Biol. 117 (4-5), 117-124 (2009) :  
Persson, B., et al. Chem. Biol. Interact. 178 (1-3), 94-98 (2009) :  
Skogsberg, J., et al. PLoS Genet. 4 (3), E1000036 (2008) :  
Edqvist, J., et al. J. Mol. Evol. 62(3):292-306(2006)

## Images

---



HSDL2 Antibody (Center) (Cat. #AP16340c) western blot analysis in 293 cell line lysates (35ug/lane). This demonstrates the HSDL2 antibody detected the HSDL2 protein (arrow).

Please note: All products are 'FOR RESEARCH USE ONLY. NOT FOR USE IN DIAGNOSTIC OR THERAPEUTIC PROCEDURES'.