

CCDC46 Antibody (N-term)

Affinity Purified Rabbit Polyclonal Antibody (Pab)

Catalog # AP16347a

Product Information

Application	WB, E
Primary Accession	Q8N8E3
Other Accession	NP_001032402.1 , NP_659473.2
Reactivity	Human
Host	Rabbit
Clonality	Polyclonal
Isotype	Rabbit IgG
Clone Names	RB28785
Calculated MW	112749
Antigen Region	286-314

Additional Information

Gene ID	201134
Other Names	Centrosomal protein of 112 kDa, Cep112, Coiled-coil domain-containing protein 46, CEP112, CCDC46
Target/Specificity	This CCDC46 antibody is generated from rabbits immunized with a KLH conjugated synthetic peptide between 286-314 amino acids from the N-terminal region of human CCDC46.
Dilution	WB~~1:1000 E~~Use at an assay dependent concentration.
Format	Purified polyclonal antibody supplied in PBS with 0.09% (W/V) sodium azide. This antibody is purified through a protein A column, followed by peptide affinity purification.
Storage	Maintain refrigerated at 2-8°C for up to 2 weeks. For long term storage store at -20°C in small aliquots to prevent freeze-thaw cycles.
Precautions	CCDC46 Antibody (N-term) is for research use only and not for use in diagnostic or therapeutic procedures.

Protein Information

Name	CEP112
Synonyms	CCDC46
Cellular Location	Cytoplasm, cytoskeleton, microtubule organizing center, centrosome.

Note=Localizes around spindle poles in some cells.

Background

CCDC46 is a protein with filament, myosin tail and ATPase domains. Orthologs of this gene exist in mouse, rat and chimp. Alternate transcriptional splice variants, encoding different isoforms, have been characterized.

References

Mick, E., et al. J Am Acad Child Adolesc Psychiatry 49(9):898-905(2010)

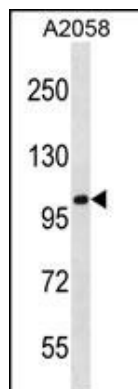
Rose, J.E., et al. Mol. Med. 16 (7-8), 247-253 (2010) :

Sombekke, M.H., et al. Mult. Scler. 16(6):652-659(2010)

Johansson, A., et al. Obesity (Silver Spring) 18(4):803-808(2010)

Harrington, J.J., et al. Nat. Biotechnol. 19(5):440-445(2001)

Images



CCDC46 Antibody (N-term) (Cat. #AP16347a) western blot analysis in A2058 cell line lysates (35ug/lane). This demonstrates the CCDC46 antibody detected the CCDC46 protein (arrow).

Please note: All products are 'FOR RESEARCH USE ONLY. NOT FOR USE IN DIAGNOSTIC OR THERAPEUTIC PROCEDURES'.