

ZNF90 Antibody (Center)

Affinity Purified Rabbit Polyclonal Antibody (Pab)

Catalog # AP16386c

Product Information

Application	WB, E
Primary Accession	Q03938
Other Accession	NP_009069.1
Reactivity	Human
Host	Rabbit
Clonality	Polyclonal
Isotype	Rabbit IgG
Calculated MW	69058
Antigen Region	84-112

Additional Information

Gene ID	7643
Other Names	Zinc finger protein 90, Zinc finger protein HTF9, ZNF90
Target/Specificity	This ZNF90 antibody is generated from rabbits immunized with a KLH conjugated synthetic peptide between 84-112 amino acids from the Central region of human ZNF90.
Dilution	WB~~1:1000 E~~Use at an assay dependent concentration.
Format	Purified polyclonal antibody supplied in PBS with 0.09% (W/V) sodium azide. This antibody is purified through a protein A column, followed by peptide affinity purification.
Storage	Maintain refrigerated at 2-8°C for up to 2 weeks. For long term storage store at -20°C in small aliquots to prevent freeze-thaw cycles.
Precautions	ZNF90 Antibody (Center) is for research use only and not for use in diagnostic or therapeutic procedures.

Protein Information

Name	ZNF90
Function	May be involved in transcriptional regulation.
Cellular Location	Nucleus.

Background

ZNF90 may be involved in transcriptional regulation.

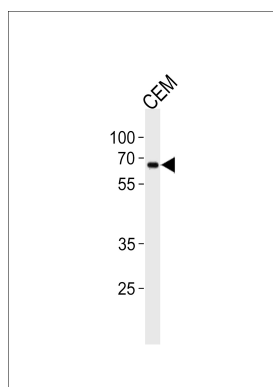
References

Venter, J.C., et al. Science 291(5507):1304-1351(2001)

Bellefroid, E.J., et al. EMBO J. 12(4):1363-1374(1993)

Bellefroid, E.J., et al. Proc. Natl. Acad. Sci. U.S.A. 88(9):3608-3612(1991)

Images



ZNF90 Antibody (Center) (Cat. #AP16386c) western blot analysis in CEM cell line lysates (35ug/lane). This demonstrates the ZNF90 antibody detected the ZNF90 protein (arrow).

Please note: All products are 'FOR RESEARCH USE ONLY. NOT FOR USE IN DIAGNOSTIC OR THERAPEUTIC PROCEDURES'.