

RPL26 Antibody (C-term)

Affinity Purified Rabbit Polyclonal Antibody (Pab)

Catalog # AP16410b

Product Information

Application	WB, E
Primary Accession	P61254
Other Accession	P12749 , P61255 , P61256 , P47832 , P61257 , Q9UNX3 , NP_000978.1
Reactivity	Human
Predicted	Bovine, Chicken, Monkey, Mouse, Rat
Host	Rabbit
Clonality	Polyclonal
Isotype	Rabbit IgG
Clone Names	RB35802
Calculated MW	17258
Antigen Region	98-127

Additional Information

Gene ID	6154
Other Names	60S ribosomal protein L26, RPL26
Target/Specificity	This RPL26 antibody is generated from rabbits immunized with a KLH conjugated synthetic peptide between 98-127 amino acids from the C-terminal region of human RPL26.
Dilution	WB~~1:1000 E~~Use at an assay dependent concentration.
Format	Purified polyclonal antibody supplied in PBS with 0.09% (W/V) sodium azide. This antibody is purified through a protein A column, followed by peptide affinity purification.
Storage	Maintain refrigerated at 2-8°C for up to 2 weeks. For long term storage store at -20°C in small aliquots to prevent freeze-thaw cycles.
Precautions	RPL26 Antibody (C-term) is for research use only and not for use in diagnostic or therapeutic procedures.

Protein Information

Name	RPL26
Function	Component of the large ribosomal subunit (PubMed: 23636399 , PubMed: 26100019 , PubMed: 32669547). The ribosome is a large ribonucleoprotein complex responsible for the synthesis of proteins in the

cell (PubMed:[23636399](#), PubMed:[26100019](#), PubMed:[32669547](#)).

Cellular Location

Cytoplasm.

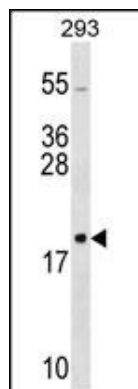
Background

Ribosomes, the organelles that catalyze protein synthesis, consist of a small 40S subunit and a large 60S subunit. Together these subunits are composed of 4 RNA species and approximately 80 structurally distinct proteins. This gene encodes a ribosomal protein that is a component of the 60S subunit. The protein belongs to the L24P family of ribosomal proteins. It is located in the cytoplasm. As is typical for genes encoding ribosomal proteins, there are multiple processed pseudogenes of this gene dispersed through the genome.

References

Ofir-Rosenfeld, Y., et al. Mol. Cell 32(2):180-189(2008) Robledo, S., et al. RNA 14(9):1918-1929(2008) Ewing, R.M., et al. Mol. Syst. Biol. 3, 89 (2007) : Kapp, L.D., et al. Annu. Rev. Biochem. 73, 657-704 (2004) : Mazumder, B., et al. Cell 115(2):187-198(2003)

Images



RPL26 Antibody (C-term) (Cat. #AP16410b) western blot analysis in 293 cell line lysates (35ug/lane). This demonstrates the RPL26 antibody detected the RPL26 protein (arrow).

Please note: All products are 'FOR RESEARCH USE ONLY. NOT FOR USE IN DIAGNOSTIC OR THERAPEUTIC PROCEDURES'.