

# PRPS2 Antibody (Center)

Affinity Purified Rabbit Polyclonal Antibody (Pab)

Catalog # AP16421c

## Product Information

---

<b>Application</b>	WB, E
<b>Primary Accession</b>	<a href="#">P11908</a>
<b>Other Accession</b>	<a href="#">Q7ZXC9</a> , <a href="#">P09330</a> , <a href="#">Q9CS42</a> , <a href="#">Q4R4R7</a> , <a href="#">P60892</a> , <a href="#">Q9D7G0</a> , <a href="#">Q4R4U3</a> , <a href="#">P60891</a> , <a href="#">Q2HJ58</a> , <a href="#">P38063</a> , <a href="#">P38620</a> , <a href="#">NP_001034180.1</a>
<b>Reactivity</b>	Human
<b>Predicted</b>	Yeast, Bovine, Monkey, Mouse, Rat, Xenopus
<b>Host</b>	Rabbit
<b>Clonality</b>	Polyclonal
<b>Isotype</b>	Rabbit IgG
<b>Clone Names</b>	RB35852
<b>Calculated MW</b>	34769
<b>Antigen Region</b>	77-106

## Additional Information

---

<b>Gene ID</b>	5634
<b>Other Names</b>	Ribose-phosphate pyrophosphokinase 2, PPRibP, Phosphoribosyl pyrophosphate synthase II, PRS-II, PRPS2
<b>Target/Specificity</b>	This PRPS2 antibody is generated from rabbits immunized with a KLH conjugated synthetic peptide between 77-106 amino acids from the Central region of human PRPS2.
<b>Dilution</b>	WB~~1:1000 E~~Use at an assay dependent concentration.
<b>Format</b>	Purified polyclonal antibody supplied in PBS with 0.09% (W/V) sodium azide. This antibody is purified through a protein A column, followed by peptide affinity purification.
<b>Storage</b>	Maintain refrigerated at 2-8°C for up to 2 weeks. For long term storage store at -20°C in small aliquots to prevent freeze-thaw cycles.
<b>Precautions</b>	PRPS2 Antibody (Center) is for research use only and not for use in diagnostic or therapeutic procedures.

## Protein Information

---

<b>Name</b>	PRPS2
<b>Function</b>	Catalyzes the synthesis of phosphoribosylpyrophosphate (PRPP) that is

essential for nucleotide synthesis.

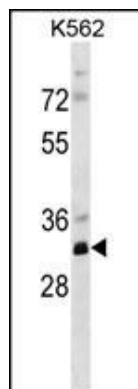
## Background

PRPS2 is a phosphoribosyl pyrophosphate synthetase that plays a central role in the synthesis of purines and pyrimidines. The encoded protein catalyzes the synthesis of 5-phosphoribosyl 1-pyrophosphate from ATP and D-ribose 5-phosphate. Alternate splicing results in multiple transcript variants.

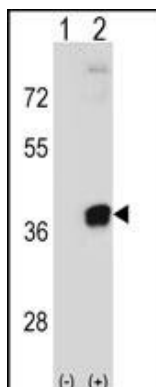
## References

Mannava, S., et al. Cell Cycle 7(15):2392-2400(2008)  
Tatibana, M., et al. Adv. Enzyme Regul. 35, 229-249 (1995) :  
Dawson, S.J., et al. J. Infect. 24(3):317-320(1992)  
Ishizuka, T., et al. Biochim. Biophys. Acta 1130(2):139-148(1992)  
Becker, M.A., et al. Genomics 8(3):555-561(1990)

## Images



PRPS2 Antibody (Center) (Cat. #AP16421c) western blot analysis in K562 cell line lysates (35ug/lane). This demonstrates the PRPS2 antibody detected the PRPS2 protein (arrow).



Western blot analysis of PRPS2 (arrow) using rabbit polyclonal PRPS2 Antibody (Center) (Cat. #AP16421c). 293 cell lysates (2 ug/lane) either nontransfected (Lane 1) or transiently transfected (Lane 2) with the PRPS2 gene.

Please note: All products are 'FOR RESEARCH USE ONLY. NOT FOR USE IN DIAGNOSTIC OR THERAPEUTIC PROCEDURES'.