

SNAPC2 Antibody (C-term)

Affinity Purified Rabbit Polyclonal Antibody (Pab)

Catalog # AP16427b

Product Information

Application	WB, E
Primary Accession	Q13487
Other Accession	NP_003074.1
Reactivity	Human
Host	Rabbit
Clonality	Polyclonal
Isotype	Rabbit IgG
Calculated MW	35556
Antigen Region	278-307

Additional Information

Gene ID	6618
Other Names	snRNA-activating protein complex subunit 2, SNAPc subunit 2, Proximal sequence element-binding transcription factor subunit delta, PSE-binding factor subunit delta, PTF subunit delta, Small nuclear RNA-activating complex polypeptide 2, snRNA-activating protein complex 45 kDa subunit, SNAPc 45 kDa subunit, SNAPC2, SNAP45
Target/Specificity	This SNAPC2 antibody is generated from rabbits immunized with a KLH conjugated synthetic peptide between 278-307 amino acids from the C-terminal region of human SNAPC2.
Dilution	WB~~1:1000 E~~Use at an assay dependent concentration.
Format	Purified polyclonal antibody supplied in PBS with 0.09% (W/V) sodium azide. This antibody is purified through a protein A column, followed by peptide affinity purification.
Storage	Maintain refrigerated at 2-8°C for up to 2 weeks. For long term storage store at -20°C in small aliquots to prevent freeze-thaw cycles.
Precautions	SNAPC2 Antibody (C-term) is for research use only and not for use in diagnostic or therapeutic procedures.

Protein Information

Name	SNAPC2
Synonyms	SNAP45

Function	Part of the SNAPc complex required for the transcription of both RNA polymerase II and III small-nuclear RNA genes. Binds to the proximal sequence element (PSE), a non-TATA-box basal promoter element common to these 2 types of genes. Recruits TBP and BRF2 to the U6 snRNA TATA box.
Cellular Location	Nucleus.

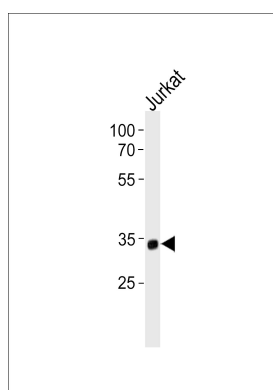
Background

SNAPC2 is a subunit of the snRNA-activating protein complex which is associated with the TATA box-binding protein. The encoded protein is necessary for RNA polymerase II and III dependent small-nuclear RNA gene transcription. Alternative splicing results in multiple transcript variants. [provided by RefSeq].

References

Shanmugam, M., et al. J. Biol. Chem. 283(21):14845-14856(2008)
Emran, F., et al. Gene 377, 96-108 (2006) :
Hinkley, C.S., et al. J. Biol. Chem. 278(20):18649-18657(2003)
Acierno, J.S. Jr., et al. Genomics 73(2):203-210(2001)
Ma, B., et al. J. Biol. Chem. 276(7):5027-5035(2001)

Images



SNAPC2 Antibody (C-term) (Cat. #AP16427b) western blot analysis in Jurkat cell line lysates (35ug/lane). This demonstrates the SNAPC2 antibody detected the SNAPC2 protein (arrow).

Please note: All products are 'FOR RESEARCH USE ONLY. NOT FOR USE IN DIAGNOSTIC OR THERAPEUTIC PROCEDURES'.