

# RBM26 Antibody (N-term)

Affinity Purified Rabbit Polyclonal Antibody (Pab)

Catalog # AP16434a

## Product Information

---

Application	WB, E
Primary Accession	<a href="#">Q5T8P6</a>
Other Accession	<a href="#">Q6NZN0</a> , <a href="#">NP_071401.3</a>
Reactivity	Human
Predicted	Mouse
Host	Rabbit
Clonality	Polyclonal
Isotype	Rabbit IgG
Clone Names	RB35887
Calculated MW	113597
Antigen Region	196-225

## Additional Information

---

Gene ID	64062
Other Names	RNA-binding protein 26, CTCL tumor antigen se70-2, RNA-binding motif protein 26, RBM26, C13orf10
Target/Specificity	This RBM26 antibody is generated from rabbits immunized with a KLH conjugated synthetic peptide between 196-225 amino acids from the N-terminal region of human RBM26.
Dilution	WB~~1:1000 E~~Use at an assay dependent concentration.
Format	Purified polyclonal antibody supplied in PBS with 0.09% (W/V) sodium azide. This antibody is purified through a protein A column, followed by peptide affinity purification.
Storage	Maintain refrigerated at 2-8°C for up to 2 weeks. For long term storage store at -20°C in small aliquots to prevent freeze-thaw cycles.
Precautions	RBM26 Antibody (N-term) is for research use only and not for use in diagnostic or therapeutic procedures.

## Protein Information

---

Name	RBM26 ( <a href="#">HGNC:20327</a> )
Synonyms	C13orf10

## Function

May be involved in the turnover of nuclear polyadenylated (pA+) RNA.

## Background

---

RBM26 (RNA binding motif protein 26) bears two RNA recognition motif (RRM) domains and a C3H1-type zinc finger. The function remains unknown.

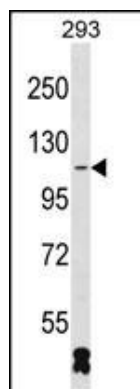
## References

---

Rose, J. Phd, et al. Mol. Med. (2010) In press :  
Miele, A., et al. J. Cell. Biochem. 102(1):136-148(2007)  
Olsen, J.V., et al. Cell 127(3):635-648(2006)  
Olsen, J.V., et al. Cell 127(3):635-648(2006)  
Beausoleil, S.A., et al. Nat. Biotechnol. 24(10):1285-1292(2006)

## Images

---



RBM26 Antibody (N-term) (Cat. #AP16434a) western blot analysis in 293 cell line lysates (35ug/lane). This demonstrates the RBM26 antibody detected the RBM26 protein (arrow).

Please note: All products are 'FOR RESEARCH USE ONLY. NOT FOR USE IN DIAGNOSTIC OR THERAPEUTIC PROCEDURES'.