

## PDS5A Antibody (C-term)

Affinity Purified Rabbit Polyclonal Antibody (Pab)

Catalog # AP16439b

### Product Information

---

Application	WB, E
Primary Accession	<a href="#">Q29RF7</a>
Other Accession	<a href="#">NP_001093869.1</a> , <a href="#">NP_001093870.1</a>
Reactivity	Human
Host	Rabbit
Clonality	Polyclonal
Isotype	Rabbit IgG
Clone Names	RB35973
Calculated MW	150830
Antigen Region	1309-1337

### Additional Information

---

Gene ID	23244
Other Names	Sister chromatid cohesion protein PDS5 homolog A, Cell proliferation-inducing gene 54 protein, Sister chromatid cohesion protein 112, SCC-112, PDS5A ( <a href="#">HGNC:29088</a> )
Target/Specificity	This PDS5A antibody is generated from rabbits immunized with a KLH conjugated synthetic peptide between 1309-1337 amino acids from the C-terminal region of human PDS5A.
Dilution	WB~~1:1000 E~~Use at an assay dependent concentration.
Format	Purified polyclonal antibody supplied in PBS with 0.09% (W/V) sodium azide. This antibody is purified through a protein A column, followed by peptide affinity purification.
Storage	Maintain refrigerated at 2-8°C for up to 2 weeks. For long term storage store at -20°C in small aliquots to prevent freeze-thaw cycles.
Precautions	PDS5A Antibody (C-term) is for research use only and not for use in diagnostic or therapeutic procedures.

### Protein Information

---

Name	PDS5A ( <a href="#">HGNC:29088</a> )
Function	Probable regulator of sister chromatid cohesion in mitosis which may stabilize cohesin complex association with chromatin. May couple sister

chromatid cohesion during mitosis to DNA replication. Cohesion ensures that chromosome partitioning is accurate in both meiotic and mitotic cells and plays an important role in DNA repair.

**Cellular Location**

Nucleus. Note=Associated with chromatin through most of the cell cycle. Dissociates from chromatin in late prophase, reassociates during late telophase.

**Tissue Location**

Highest level in colon. Low levels in lung, ovary, breast and kidney. Reduced level in renal tumor tissue. Isoform 2 is expressed in kidney.

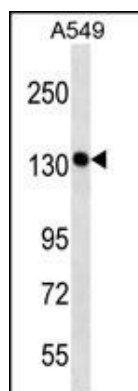
## Background

---

PDS5A may contribute to regulation of sister chromatid cohesion during mitosis.

## Images

---



PDS5A Antibody (C-term) (Cat. #AP16439b) western blot analysis in A549 cell line lysates (35ug/lane). This demonstrates the PDS5A antibody detected the PDS5A protein (arrow).

Please note: All products are 'FOR RESEARCH USE ONLY. NOT FOR USE IN DIAGNOSTIC OR THERAPEUTIC PROCEDURES'.