

Mouse Lims2 Antibody (C-term)

Affinity Purified Rabbit Polyclonal Antibody (Pab)
Catalog # AP16453b

Product Information

Application	WB, E
Primary Accession	Q91XD2
Other Accession	NP_659111.1
Reactivity	Mouse
Host	Rabbit
Clonality	Polyclonal
Isotype	Rabbit IgG
Clone Names	RB36199
Calculated MW	39031
Antigen Region	296-325

Additional Information

Gene ID	225341
Other Names	LIM and senescent cell antigen-like-containing domain protein 2, Particularly interesting new Cys-His protein 2, PINCH-2, Lims2, Pinch2
Target/Specificity	This Mouse Lims2 antibody is generated from rabbits immunized with a KLH conjugated synthetic peptide between 296-325 amino acids from the C-terminal region of mouse Lims2.
Dilution	WB~~1:1000 E~~Use at an assay dependent concentration.
Format	Purified polyclonal antibody supplied in PBS with 0.09% (W/V) sodium azide. This antibody is purified through a protein A column, followed by peptide affinity purification.
Storage	Maintain refrigerated at 2-8°C for up to 2 weeks. For long term storage store at -20°C in small aliquots to prevent freeze-thaw cycles.
Precautions	Mouse Lims2 Antibody (C-term) is for research use only and not for use in diagnostic or therapeutic procedures.

Protein Information

Name	Lims2
Synonyms	Pinch2
Function	Adapter protein in a cytoplasmic complex linking beta- integrins to the actin

cytoskeleton, bridges the complex to cell surface receptor tyrosine kinases and growth factor receptors.

Cellular Location

Cell junction, focal adhesion. Cell membrane; Peripheral membrane protein; Cytoplasmic side

Tissue Location

Detected in heart, lung, kidney, liver, urinary bladder, fat, skin, skeletal muscle, uterus, large intestine and testis.

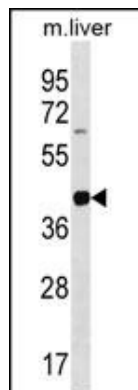
Background

Competes with LIMS1 for binding to ILK. Plays a role in modulating cell spreading and migration (By similarity).

References

Guo, G., et al. *Dev. Cell* 18(4):675-685(2010)
Liang, X., et al. *Circulation* 120(7):568-576(2009)
Pereira, J.A., et al. *J. Cell Biol.* 185(1):147-161(2009)
Aguado, T., et al. *J. Neurosci.* 26(5):1551-1561(2006)
Stanchi, F., et al. *J. Cell. Sci.* 118 (PT 24), 5899-5910 (2005) :

Images



Mouse Lims2 Antibody (C-term) (Cat. #AP16453b) western blot analysis in mouse liver tissue lysates (35ug/lane). This demonstrates the Lims2 antibody detected the Lims2 protein (arrow).

Please note: All products are 'FOR RESEARCH USE ONLY. NOT FOR USE IN DIAGNOSTIC OR THERAPEUTIC PROCEDURES'.