

Mouse Mesp1 Antibody (Center)

Affinity Purified Rabbit Polyclonal Antibody (Pab)

Catalog # AP16455c

Product Information

Application	WB, E
Primary Accession	P97309
Other Accession	O08574 , Q0VG99 , Q9BRJ9 , NP_032614.2
Reactivity	Human, Mouse
Predicted	Human
Host	Rabbit
Clonality	Polyclonal
Isotype	Rabbit IgG
Clone Names	RB36336
Calculated MW	26386
Antigen Region	62-91

Additional Information

Gene ID	17292
Other Names	Mesoderm posterior protein 1, Mesp1
Target/Specificity	This Mouse Mesp1 antibody is generated from rabbits immunized with a KLH conjugated synthetic peptide between 62-91 amino acids from the Central region of mouse Mesp1.
Dilution	WB~~1:1000 E~~Use at an assay dependent concentration.
Format	Purified polyclonal antibody supplied in PBS with 0.09% (W/V) sodium azide. This antibody is purified through a protein A column, followed by peptide affinity purification.
Storage	Maintain refrigerated at 2-8°C for up to 2 weeks. For long term storage store at -20°C in small aliquots to prevent freeze-thaw cycles.
Precautions	Mouse Mesp1 Antibody (Center) is for research use only and not for use in diagnostic or therapeutic procedures.

Protein Information

Name	Mesp1
Function	Transcription factor. Plays a role in the epithelialization of somitic mesoderm and in the development of cardiac mesoderm. Defines the rostrocaudal patterning of the somites by participating in distinct Notch

pathways.

Cellular Location

Nucleus.

Tissue Location

No expression was detected in adult tissues except the testis. Expression in the testis was regulated developmentally; expressed 2 weeks after birth, and increases, reaching the full expression level in mature testes.

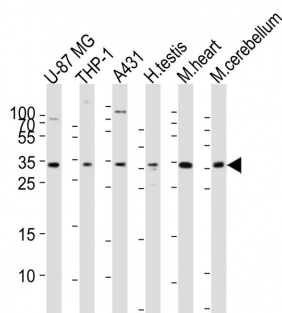
Background

Mesp1 is a transcription factor. Plays a role in the epithelialization of somitic mesoderm and in the development of cardiac mesoderm. Defines the rostrocaudal patterning of the somites by participating in distinct Notch pathways.

References

Yu, S., et al. Dev. Biol. 347(1):92-108(2010)
Li, P., et al. Dev. Cell 18(3):480-485(2010)
Powers, S.E., et al. Development 137(2):249-259(2010)
Randall, V., et al. J. Clin. Invest. 119(11):3301-3310(2009)
Dominguez-Frutos, E., et al. Mech. Dev. 126(10):873-881(2009)

Images



Western blot analysis of lysates from U-87 MG, THP-1, A431 cell line, human testis, mouse heart, mouse cerebellum tissue lysate(from left to right), using MESP1 Antibody (Mouse)(Cat. #AP16455c). A goat anti-rabbit IgG H&L(HRP) at 1:10000 dilution was used as the secondary antibody. Lysates at 20ug per lane.

Please note: All products are 'FOR RESEARCH USE ONLY. NOT FOR USE IN DIAGNOSTIC OR THERAPEUTIC PROCEDURES'.