

GPLOW Antibody (Center)

Affinity Purified Rabbit Polyclonal Antibody (Pab)

Catalog # AP16513c

Product Information

| | |
|-------------------|-----------------------------|
| Application | WB, E |
| Primary Accession | Q92917 |
| Other Accession | NP_056513.2 |
| Reactivity | Human |
| Host | Rabbit |
| Clonality | Polyclonal |
| Isotype | Rabbit IgG |
| Clone Names | RB35995 |
| Calculated MW | 52229 |
| Antigen Region | 309-338 |

Additional Information

| | |
|--------------------|--|
| Gene ID | 27238 |
| Other Names | G patch domain and KOW motifs-containing protein, G patch domain-containing protein 5, Protein MOS2 homolog, Protein T54, GPLOW, GPATC5, GPATCH5, T54 |
| Target/Specificity | This GPLOW antibody is generated from rabbits immunized with a KLH conjugated synthetic peptide between 309-338 amino acids from the Central region of human GPLOW. |
| Dilution | WB~~1:1000 E~~Use at an assay dependent concentration. |
| Format | Purified polyclonal antibody supplied in PBS with 0.09% (W/V) sodium azide. This antibody is purified through a protein A column, followed by peptide affinity purification. |
| Storage | Maintain refrigerated at 2-8°C for up to 2 weeks. For long term storage store at -20°C in small aliquots to prevent freeze-thaw cycles. |
| Precautions | GPLOW Antibody (Center) is for research use only and not for use in diagnostic or therapeutic procedures. |

Protein Information

| | |
|----------|----------------------|
| Name | GPLOW |
| Synonyms | GPATC5, GPATCH5, T54 |

| | |
|--------------------------|--|
| Function | RNA-binding protein involved in pre-mRNA splicing. As a component of the minor spliceosome, involved in the splicing of U12- type introns in pre-mRNAs (Probable). |
| Cellular Location | Nucleus |

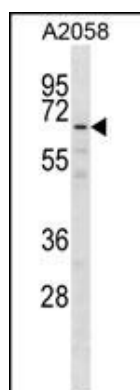
Background

T54, also known as GPKOW (G patch domain and KOW motifs), GPATC5 or GPATCH5 (G patch domain-containing protein 5), is a potential RNA-binding protein consisting of one central G patch domain and two C-terminal KOW domains. T54 is a 476 amino acid protein belonging to the MOS2 family. It is a mammalian homolog of the *Arabidopsis thaliana* MOS2 (modifier of SNC1, 2) nuclear protein that is required for innate immunity. Similar to *A. thaliana* MOS2, T54 localizes to the nucleus and contains G patch and KOW domains, suggesting that T54 may play a similar role in mammalian innate immunity.

References

Lamesch, P., et al. Genomics 89(3):307-315(2007)
Olsen, J.V., et al. Cell 127(3):635-648(2006)
Olsen, J.V., et al. Cell 127(3):635-648(2006)
Zhang, Y., et al. Curr. Biol. 15(21):1936-1942(2005)
Schindelbauer, D., et al. Genome Res. 6(11):1056-1069(1996)

Images



GPKOW Antibody (Center) (Cat. #AP16513c) western blot analysis in A2058 cell line lysates (35ug/lane). This demonstrates the GPKOW antibody detected the GPKOW protein (arrow).

Please note: All products are 'FOR RESEARCH USE ONLY. NOT FOR USE IN DIAGNOSTIC OR THERAPEUTIC PROCEDURES'.