

# KLHDC4 Antibody (Center)

Affinity Purified Rabbit Polyclonal Antibody (Pab)

Catalog # AP16529c

## Product Information

---

Application	WB, E
Primary Accession	<a href="#">Q8TBB5</a>
Other Accession	<a href="#">NP_060036.2</a>
Reactivity	Human
Host	Rabbit
Clonality	Polyclonal
Isotype	Rabbit IgG
Clone Names	RB36042
Calculated MW	57892
Antigen Region	237-265

## Additional Information

---

Gene ID	54758
Other Names	Kelch domain-containing protein 4, KLHDC4
Target/Specificity	This KLHDC4 antibody is generated from rabbits immunized with a KLH conjugated synthetic peptide between 237-265 amino acids from the Central region of human KLHDC4.
Dilution	WB~~1:1000 E~~Use at an assay dependent concentration.
Format	Purified polyclonal antibody supplied in PBS with 0.09% (W/V) sodium azide. This antibody is purified through a protein A column, followed by peptide affinity purification.
Storage	Maintain refrigerated at 2-8°C for up to 2 weeks. For long term storage store at -20°C in small aliquots to prevent freeze-thaw cycles.
Precautions	KLHDC4 Antibody (Center) is for research use only and not for use in diagnostic or therapeutic procedures.

## Protein Information

---

Name	KLHDC4
------	--------

## Background

---

Kelch proteins (and Kelch-like proteins) are proteins that have repeated kelch domains. Most Kelch proteins

also have a BTB (defn) domain. Each kelch domain forms the blade of a propellar structure, with the repeated kelch domains forming a Beta-propellar. The structure of this Beta-propellar is known but the function is not characterised. KLHDC4 contains six Kelch repeats. There are three named isoforms.

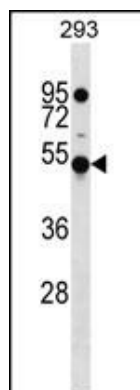
## References

---

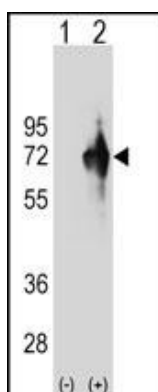
Strausberg, R.L., et al. Proc. Natl. Acad. Sci. U.S.A. 99(26):16899-16903(2002)

## Images

---



KLHDC4 Antibody (Center) (Cat. #AP16529c) western blot analysis in 293 cell line lysates (35ug/lane). This demonstrates the KLHDC4 antibody detected the KLHDC4 protein (arrow).



Western blot analysis of KLHDC4 (arrow) using rabbit polyclonal KLHDC4 Antibody (Center) (Cat. #AP16529c). 293 cell lysates (2 ug/lane) either nontransfected (Lane 1) or transiently transfected (Lane 2) with the KLHDC4 gene.

Please note: All products are 'FOR RESEARCH USE ONLY. NOT FOR USE IN DIAGNOSTIC OR THERAPEUTIC PROCEDURES'.