

PLEKHF1 Antibody (N-term)

Affinity Purified Rabbit Polyclonal Antibody (Pab)

Catalog # AP16531a

Product Information

Application	WB, E
Primary Accession	Q96S99
Other Accession	NP_077286.3
Reactivity	Human
Host	Rabbit
Clonality	Polyclonal
Isotype	Rabbit IgG
Clone Names	RB36045
Calculated MW	31195
Antigen Region	51-79

Additional Information

Gene ID	79156
Other Names	Pleckstrin homology domain-containing family F member 1, PH domain-containing family F member 1, Lysosome-associated apoptosis-inducing protein containing PH and FYVE domains, Apoptosis-inducing protein, PH and FYVE domain-containing protein 1, Phafin-1, Zinc finger FYVE domain-containing protein 15, PLEKHF1, APPD, LAPF, ZFYVE15
Target/Specificity	This PLEKHF1 antibody is generated from rabbits immunized with a KLH conjugated synthetic peptide between 51-79 amino acids from the N-terminal region of human PLEKHF1.
Dilution	WB~~1:1000 E~~Use at an assay dependent concentration.
Format	Purified polyclonal antibody supplied in PBS with 0.09% (W/V) sodium azide. This antibody is purified through a protein A column, followed by peptide affinity purification.
Storage	Maintain refrigerated at 2-8°C for up to 2 weeks. For long term storage store at -20°C in small aliquots to prevent freeze-thaw cycles.
Precautions	PLEKHF1 Antibody (N-term) is for research use only and not for use in diagnostic or therapeutic procedures.

Protein Information

Name	PLEKHF1
------	---------

Synonyms	APPD, LAPF, ZFYVE15
Function	May induce apoptosis through the lysosomal-mitochondrial pathway. Translocates to the lysosome initiating the permeabilization of lysosomal membrane (LMP) and resulting in the release of CTSD and CTSL to the cytoplasm. Triggers the caspase-independent apoptosis by altering mitochondrial membrane permeabilization (MMP) resulting in the release of PDCD8.
Cellular Location	Nucleus. Cytoplasm, perinuclear region. Lysosome. Note=Translocates to lysosome during apoptosis
Tissue Location	Highly expressed in heart and skeletal muscle. Weakly expressed in brain, thymus, spleen, kidney, liver, small intestine, placenta and lung.

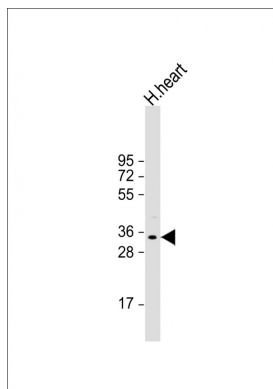
Background

PLEKHF1 may induce apoptosis through the lysosomal-mitochondrial pathway. Translocates to the lysosome initiating the permeabilization of lysosomal membrane (LMP) and resulting in the release of CTSD and CTSL to the cytoplasm. Triggers the caspase-independent apoptosis by altering mitochondrial membrane permeabilization (MMP) resulting in the release of PDCD8.

References

Chen, W., et al. J. Biol. Chem. 280(49):40985-40995(2005)

Images



Anti-PLEKHF1 Antibody (N-term) at 1:1000 dilution + human heart lysate Lysates/proteins at 20 µg per lane. Secondary Goat Anti-Rabbit IgG, (H+L), Peroxidase conjugated at 1/10000 dilution. Predicted band size : 31 kDa Blocking/Dilution buffer: 5% NFDM/TBST.

Please note: All products are 'FOR RESEARCH USE ONLY. NOT FOR USE IN DIAGNOSTIC OR THERAPEUTIC PROCEDURES'.