

# GPR37L1 Antibody (N-term)

Affinity Purified Rabbit Polyclonal Antibody (Pab)

Catalog # AP16532a

## Product Information

---

Application	WB, E
Primary Accession	<a href="#">O60883</a>
Other Accession	<a href="#">NP_004758.3</a>
Reactivity	Human
Host	Rabbit
Clonality	Polyclonal
Isotype	Rabbit IgG
Clone Names	RB36046
Calculated MW	52771
Antigen Region	44-72

## Additional Information

---

Gene ID	9283
Other Names	Prosaposin receptor GPR37L1, Endothelin B receptor-like protein 2, ETBR-LP-2, G-protein coupled receptor 37-like 1, GPR37L1, ETBRLP2
Target/Specificity	This GPR37L1 antibody is generated from rabbits immunized with a KLH conjugated synthetic peptide between 44-72 amino acids from the N-terminal region of human GPR37L1.
Dilution	WB~~1:1000 E~~Use at an assay dependent concentration.
Format	Purified polyclonal antibody supplied in PBS with 0.09% (W/V) sodium azide. This antibody is purified through a protein A column, followed by peptide affinity purification.
Storage	Maintain refrigerated at 2-8°C for up to 2 weeks. For long term storage store at -20°C in small aliquots to prevent freeze-thaw cycles.
Precautions	GPR37L1 Antibody (N-term) is for research use only and not for use in diagnostic or therapeutic procedures.

## Protein Information

---

Name	GPR37L1
Synonyms	ETBRLP2
Function	G-protein coupled receptor (PubMed: <a href="#">27072655</a> ). Has been shown to bind

the neuroprotective and glioprotective factor prosaposin (PSAP), leading to endocytosis followed by an ERK phosphorylation cascade (PubMed:[23690594](#)). However, other studies have shown that prosaposin does not increase activity (PubMed:[27072655](#), PubMed:[28688853](#)). It has been suggested that GPR37L1 is a constitutively active receptor which signals through the guanine nucleotide-binding protein G(s) subunit alpha (PubMed:[27072655](#)). Participates in the regulation of postnatal cerebellar development by modulating the Shh pathway (By similarity). Regulates baseline blood pressure in females and protects against cardiovascular stress in males (By similarity). Mediates inhibition of astrocyte glutamate transporters and reduction in neuronal N-methyl-D-aspartate receptor activity (By similarity).

#### Cellular Location

Cell membrane; Multi-pass membrane protein. Cell projection, cilium membrane {ECO:0000250|UniProtKB:Q99JG2}; Multi-pass membrane protein. Note=Associates with the basal membrane of Bergmann glia cell primary cilia. {ECO:0000250|UniProtKB:Q99JG2}

#### Tissue Location

Expressed in primary cortical astrocytes (at protein level) (PubMed:23690594). Expressed in the central nervous system (PubMed:9539149).

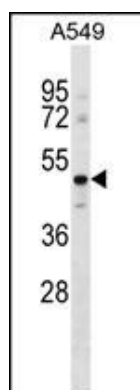
## Background

GPR37L1 is orphan receptor.

## References

Davila, S., et al. Genes Immun. 11(3):232-238(2010)  
 Arking, D.E., et al. PLoS ONE 5 (3), E9879 (2010) :  
 Valdenaire, O., et al. FEBS Lett. 424(3):193-196(1998)

## Images



GPR37L1 Antibody (N-term) (Cat. #AP16532a) western blot analysis in A549 cell line lysates (35ug/lane). This demonstrates the GPR37L1 antibody detected the GPR37L1 protein (arrow).

Please note: All products are 'FOR RESEARCH USE ONLY. NOT FOR USE IN DIAGNOSTIC OR THERAPEUTIC PROCEDURES'.