

# HSD17B1 Antibody (C-term)

Affinity Purified Rabbit Polyclonal Antibody (Pab)

Catalog # AP16545b

## Product Information

---

|                   |                             |
|-------------------|-----------------------------|
| Application       | WB, E                       |
| Primary Accession | <a href="#">P14061</a>      |
| Other Accession   | <a href="#">NP_000404.2</a> |
| Reactivity        | Human                       |
| Host              | Rabbit                      |
| Clonality         | Polyclonal                  |
| Isotype           | Rabbit IgG                  |
| Clone Names       | RB36086                     |
| Calculated MW     | 34950                       |
| Antigen Region    | 227-256                     |

## Additional Information

---

|                    |   |
|--------------------|---|
| Gene ID            | 3292  |
| Other Names        | Estradiol 17-beta-dehydrogenase 1, 17-beta-hydroxysteroid dehydrogenase type 1, 17-beta-HSD 1, 20 alpha-hydroxysteroid dehydrogenase, 20-alpha-HSD, E2DH, Placental 17-beta-hydroxysteroid dehydrogenase, HSD17B1, E17KSR, EDH17B1, EDH17B2, EDHB17 |
| Target/Specificity | This HSD17B1 antibody is generated from rabbits immunized with a KLH conjugated synthetic peptide between 227-256 amino acids from the C-terminal region of human HSD17B1.  |
| Dilution           | WB~~1:1000 E~~Use at an assay dependent concentration.  |
| Format             | Purified polyclonal antibody supplied in PBS with 0.09% (W/V) sodium azide. This antibody is purified through a protein A column, followed by peptide affinity purification.  |
| Storage            | Maintain refrigerated at 2-8°C for up to 2 weeks. For long term storage store at -20°C in small aliquots to prevent freeze-thaw cycles.   |
| Precautions        | HSD17B1 Antibody (C-term) is for research use only and not for use in diagnostic or therapeutic procedures.   |

## Protein Information

---

|          |   |
|----------|---|
| Name     | HSD17B1 ( <a href="#">HGNC:5210</a> )                                       |
| Function | Favors the reduction of estrogens and androgens. Converts estrone (E1) to a |

more potent estrogen, 17beta-estradiol (E2) (PubMed:[8994190](#)). Also has 20-alpha-HSD activity. Uses preferentially NADH.

**Cellular Location** Cytoplasm.

## Background

---

Favors the reduction of estrogens and androgens. Also has 20-alpha-HSD activity. Uses preferentially NADH.

## References

---

Canzian, F., et al. Hum. Mol. Genet. 19(19):3873-3884(2010)

Liu, C.Y., et al. Carcinogenesis 31(7):1259-1263(2010)

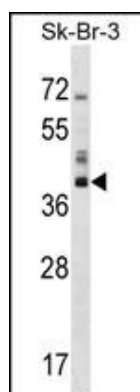
Lamp, M., et al. Gynecol. Endocrinol. (2010) In press :

Haller, F., et al. J. Mol. Biol. 399(2):255-267(2010)

Iwasaki, M., et al. Nutr Cancer 62(4):466-475(2010)

## Images

---



HSD17B1 Antibody (C-term) (Cat. #AP16545b) western blot analysis in SK-BR-3 cell line lysates (35ug/lane). This demonstrates the HSD17B1 antibody detected the HSD17B1 protein (arrow).

Please note: All products are 'FOR RESEARCH USE ONLY. NOT FOR USE IN DIAGNOSTIC OR THERAPEUTIC PROCEDURES'.