

# CCDC141 Antibody (N-term)

Affinity Purified Rabbit Polyclonal Antibody (Pab)

Catalog # AP16548a

## Product Information

---

Application	WB, E
Primary Accession	<a href="#">Q6ZP82</a>
Other Accession	<a href="#">NP_775919.2</a>
Reactivity	Human
Host	Rabbit
Clonality	Polyclonal
Isotype	Rabbit IgG
Clone Names	RB36102
Calculated MW	175067
Antigen Region	1-30

## Additional Information

---

Gene ID	285025
Other Names	Coiled-coil domain-containing protein 141, Coiled-coil protein associated with myosin II and DISC1, CCDC141, CAMDI {ECO:0000303   PubMed:20956536}
Target/Specificity	This CCDC141 antibody is generated from rabbits immunized with a KLH conjugated synthetic peptide between 1-30 amino acids from the N-terminal region of human CCDC141.
Dilution	WB~~1:1000 E~~Use at an assay dependent concentration.
Format	Purified polyclonal antibody supplied in PBS with 0.09% (W/V) sodium azide. This antibody is purified through a protein A column, followed by peptide affinity purification.
Storage	Maintain refrigerated at 2-8°C for up to 2 weeks. For long term storage store at -20°C in small aliquots to prevent freeze-thaw cycles.
Precautions	CCDC141 Antibody (N-term) is for research use only and not for use in diagnostic or therapeutic procedures.

## Protein Information

---

Name	CCDC141
Synonyms	CAMDI {ECO:0000303   PubMed:20956536}
Function	Plays a critical role in cortical radial and GnRH neurons migration during

brain development. Regulates cortical radial migration by negatively controlling the activity of histone deacetylase 6 (HDAC6) and promotes centrosome maturation. CAMDI is required for dilation formation of cortical neurons during radial migration. Plays a critical role in learning and memory performance through regulation of AMPA- selective glutamate receptors (AMPArs) cell surface expression in competition with KIBRA.

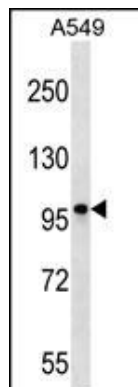
#### Cellular Location

Cytoplasm {ECO:0000250|UniProtKB:E9Q8Q6}. Cytoplasm, cytoskeleton, microtubule organizing center, centrosome {ECO:0000250|UniProtKB:E9Q8Q6}. Note=Co-localized with DISC1 at/around the centrosome. Localizes to the centrosome, at least in part, in a DISC1-dependent manner. Accumulates and oscillates at the dilation in cortical neurons during migration. CAMDI protein level is stabilized at the G1 phase and destabilized at the G2 /M phase {ECO:0000250|UniProtKB:E9Q8Q6}

#### References

Ehret, G.B., et al. Eur. J. Hum. Genet. 17(12):1650-1657(2009)  
Morris, J.A., et al. Hum. Mol. Genet. 12(13):1591-1608(2003)

#### Images



CCDC141 Antibody (N-term) (Cat. #AP16548a) western blot analysis in A549 cell line lysates (35ug/lane). This demonstrates the CCDC141 antibody detected the CCDC141 protein (arrow).

Please note: All products are 'FOR RESEARCH USE ONLY. NOT FOR USE IN DIAGNOSTIC OR THERAPEUTIC PROCEDURES'.