

TAS1R1 Antibody (Center)

Affinity Purified Rabbit Polyclonal Antibody (Pab)

Catalog # AP16553c

Product Information

Application	WB, E
Primary Accession	Q7RTX1
Other Accession	NP_619642.2
Reactivity	Human
Host	Rabbit
Clonality	Polyclonal
Isotype	Rabbit IgG
Clone Names	RB36127
Calculated MW	93074
Antigen Region	323-351

Additional Information

Gene ID	80835
Other Names	Taste receptor type 1 member 1, G-protein coupled receptor 70, TAS1R1, GPR70, T1R1, TR1
Target/Specificity	This TAS1R1 antibody is generated from rabbits immunized with a KLH conjugated synthetic peptide between 323-351 amino acids from the Central region of human TAS1R1.
Dilution	WB~~1:1000 E~~Use at an assay dependent concentration.
Format	Purified polyclonal antibody supplied in PBS with 0.09% (W/V) sodium azide. This antibody is purified through a protein A column, followed by peptide affinity purification.
Storage	Maintain refrigerated at 2-8°C for up to 2 weeks. For long term storage store at -20°C in small aliquots to prevent freeze-thaw cycles.
Precautions	TAS1R1 Antibody (Center) is for research use only and not for use in diagnostic or therapeutic procedures.

Protein Information

Name	TAS1R1
Synonyms	GPR70, T1R1, TR1
Function	Putative taste receptor. TAS1R1/TAS1R3 responds to the umami taste

stimulus (the taste of monosodium glutamate). Sequence differences within and between species can significantly influence the selectivity and specificity of taste responses.

Cellular Location

Cell membrane; Multi-pass membrane protein.

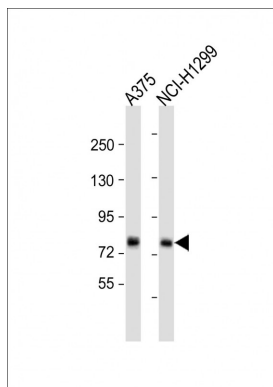
Background

The protein encoded by this gene is a G protein-coupled receptor and is a component of the heterodimeric amino acid taste receptor T1R1+3. The T1R1+3 receptor responds to L-amino acids but not to D-enantiomers or other compounds. Most amino acids that are perceived as sweet activate T1R1+3, and this activation is strictly dependent on an intact T1R1+3 heterodimer. Multiple transcript variants encoding different isoforms have been found for this gene.

References

Fushan, A.A., et al. Chem. Senses 35(7):579-592(2010)
Pinheiro, A.P., et al. Am. J. Med. Genet. B Neuropsychiatr. Genet. 153B (5), 1070-1080 (2010) :
Prezeau, L., et al. Curr Opin Pharmacol 10(1):6-13(2010)
Chandrashekar, J., et al. Nature 444(7117):288-294(2006)
Xu, H., et al. Proc. Natl. Acad. Sci. U.S.A. 101(39):14258-14263(2004)

Images



All lanes : Anti-TAS1R1 Antibody (Center) at 1:1000 dilution
Lane 1: A375 whole cell lysate
Lane 2: NCI-H1299 whole cell lysate
Lysates/proteins at 20 µg per lane.
Secondary Goat Anti-Rabbit IgG, (H+L), Peroxidase conjugated at 1/10000 dilution. Predicted band size : 93 kDa
Blocking/Dilution buffer: 5% NFDM/TBST.

Please note: All products are 'FOR RESEARCH USE ONLY. NOT FOR USE IN DIAGNOSTIC OR THERAPEUTIC PROCEDURES'.